

ARHGEF5 antibody



Catalog Number: 108188

Product name

ARHGEF5 antibody

WB: 1:1000-1:10000

IP: 1:200-1:2000

Specificity

Human, Mouse, Rat; other species not tested.

IHC: 1:20-1:200

Antibody description

ARHGEF5 Rabbit Polyclonal antibody. Positive IHC detected in human pancreas cancer tissue. Positive IP detected in mouse kidney tissue. Positive WB detected in MCF7 cells, HeLa cells, human kidney tissue, human liver tissue, mouse kidney tissue, rat kidney tissue. Observed molecular weight by Western-blot: 60 kDa

Preparation

This antibody was obtained by immunization of ARHGEF5 recombinant protein (Accession Number: BC010046). Purification method: Antigen affinity purified.

Formulation

PBS with 0.1% sodium azide and 50% glycerol pH 7.3.

Storage

Store at -20°C. DO NOT ALIQUOT

Clonality

Polyclonal

Ig Type

Rabbit IgG

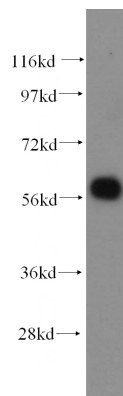
Applications

ELISA, WB, IHC, IP

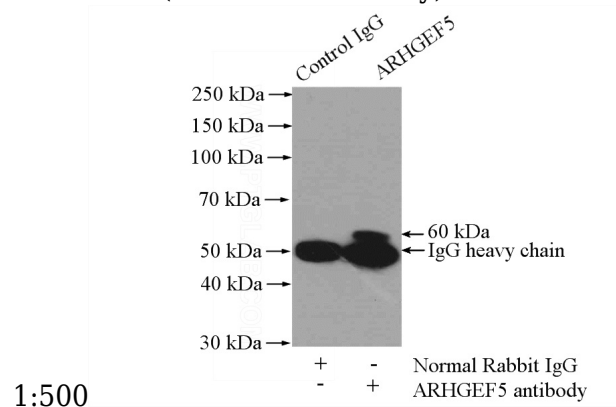
Dilutions

Recommended Dilution:

Validations

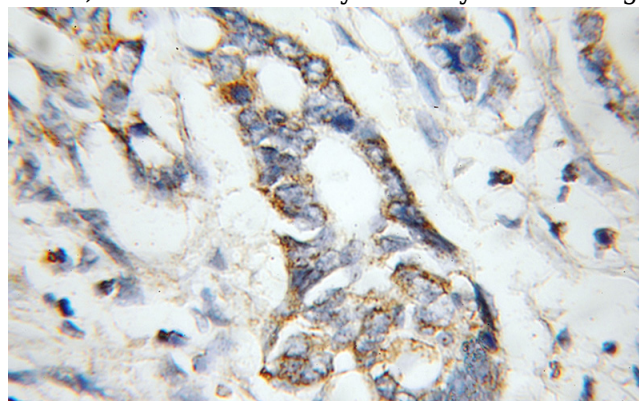


MCF7 cells were subjected to SDS PAGE followed by western blot with Catalog No:108188(ARHGEF5 antibody) at dilution of



1:500

IP Result of anti-ARHGEF5 (IP:Catalog No:108188, 4ug; Detection:Catalog No:108188 1:500) with mouse kidney tissue lysate 4000ug.



ARHGEF5 antibody



Catalog Number: 108188

Immunohistochemical of paraffin-embedded
human pancreas cancer using Catalog

No:108188(ARHGEF5 antibody) at dilution of 1:50
(under 10x lens)