

# RPL30 antibody



Catalog Number: 114888

## Product name

RPL30 antibody

## Immunogen

[Human RPL30 Recombinant protein \(GST tag & His tag\)](#)

## Specificity

human, mouse, rat; other species not tested.

## Antibody description

RPL30 Rabbit Polyclonal antibody. Positive WB detected in A549 cells, HeLa cells, Jurkat cells, MCF7 cells. Observed molecular weight by Western-blot: 13kd

## Preparation

This antibody was obtained by immunization of RPL30 recombinant protein (Accession Number: NM\_000989). Purification method: Antigen affinity purified.

## Formulation

PBS with 0.02% sodium azide and 50% glycerol pH 7.3.

## Storage

Store at -20°C. DO NOT ALIQUOT

## Clonality

Polyclonal

## Ig Type

Rabbit IgG

## Applications

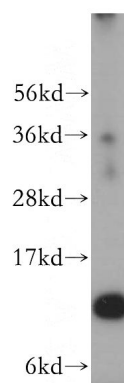
ELISA, WB

## Dilutions

Recommended Dilution:

WB: 1:500-1:5000

## Validations



A549 cells were subjected to SDS PAGE followed by western blot with Catalog No:114888(RPL30 antibody) at dilution of 1:500