

# Anti-Cytochrome P450 17A1/CYP17A1 Rabbit antibody



Catalog Number: 167378

## Product name

Anti-Cytochrome P450 17A1/CYP17A1 Rabbit antibody

## Specificity

Human, Mouse, Rat

## Antibody description

Cytochrome P450 17A1/CYP17A1 Rabbit polyclonal antibody

## Preparation

Antigen: A synthetic peptide of human Cytochrome P450 17A1

## Formulation

Supplied in 50nM Tris-Glycine(pH 7.4), 0.15M NaCl, 40%Glycerol, 0.01% sodium azide and 0.05% BSA.

## Storage

Store at -20°C. Stable for 12 months from date of receipt.

## Clonality

Polyclonal

## Ig Type

Rabbit IgG

## Applications

WB, IHC-P, ICC/IF, FC, IP

## Dilutions

WB: 1/1000-1/5000

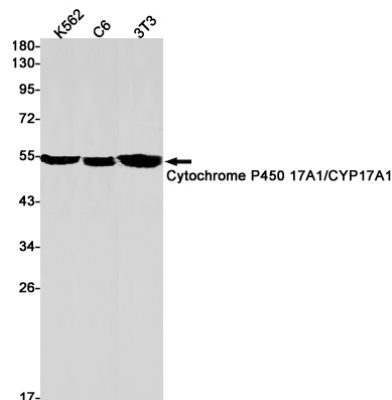
IHC: 1/20

ICC/IF: 1/20

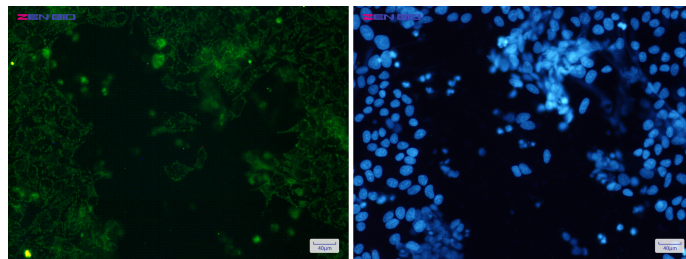
FC: 1/20

IP: 1/20

## Validations



Western blot detection of Cytochrome P450 17A1/CYP17A1 in K562, C6, 3T3 cell lysates using Cytochrome P450 17A1/CYP17A1 Rabbit pAb(1:1000 diluted). Predicted band size: 57kDa. Observed band size: 55kDa.



Immunocytochemistry of Cytochrome P450 17A1(green) in HeLa cells using Cytochrome P450 17A1 Rabbit pAb at dilution 1/50, and DAPI(blue)