

# LAMP3 antibody



Catalog Number: 112278

## Product name

LAMP3 antibody

WB: 1:500-1:5000

IP: 1:200-1:2000

## Specificity

Human, Mouse, Rat; other species not tested.

IHC: 1:20-1:200

## Antibody description

LAMP3 Rabbit Polyclonal antibody. Positive IHC detected in human lung tissue, human placenta tissue, human testis tissue. Positive WB detected in mouse lung tissue, A375 cells, A549 cells, mouse thymus tissue, rat lung tissue. Positive IP detected in A549 cells. Observed molecular weight by Western-blot: 70 kDa

## Preparation

This antibody was obtained by immunization of LAMP3 recombinant protein (Accession Number: NM\_014398). Purification method: Antigen affinity purified.

## Formulation

PBS with 0.02% sodium azide and 50% glycerol pH 7.3.

## Storage

Store at -20°C. DO NOT ALIQUOT

## Clonality

Polyclonal

## Ig Type

Rabbit IgG

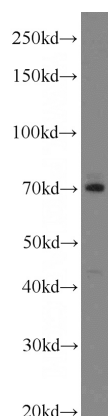
## Applications

ELISA, WB, IHC, IP

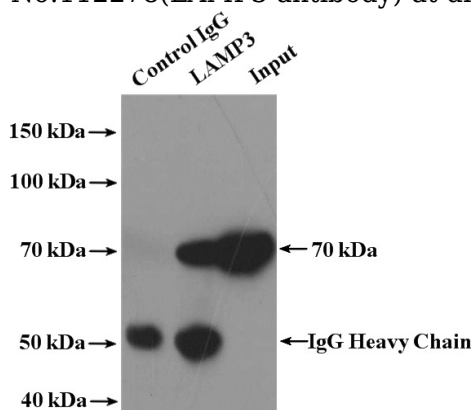
## Dilutions

Recommended Dilution:

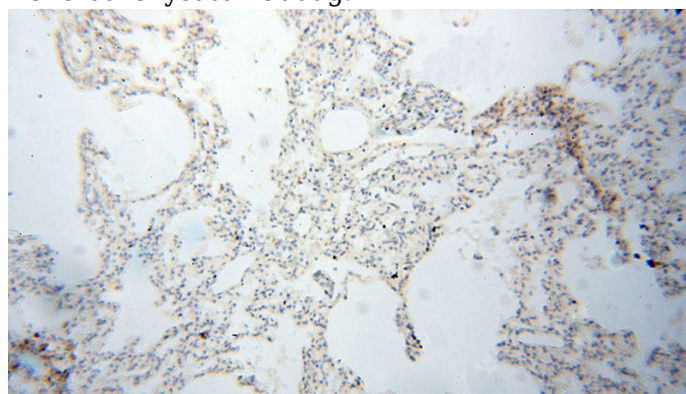
## Validations



mouse lung tissue were subjected to SDS PAGE followed by western blot with Catalog No:112278(LAMP3 antibody) at dilution of 1:1000



IP Result of anti-LAMP3 (IP:Catalog No:112278, 4ug; Detection:Catalog No:112278 1:500) with A549 cells lysate 2800ug.

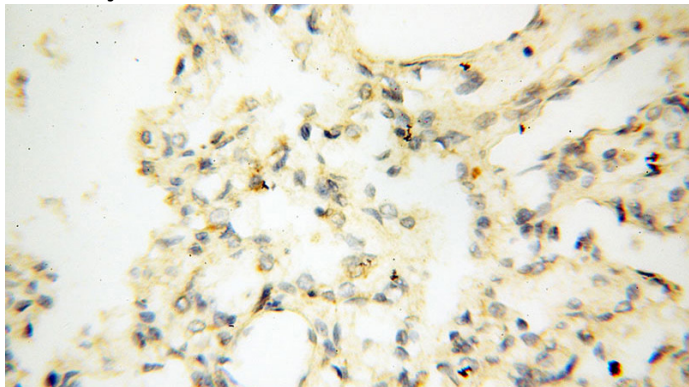


# LAMP3 antibody

Catalog Number: 112278

---

Immunohistochemical of paraffin-embedded human lung using Catalog No:112278(LAMP3 antibody) at dilution of 1:50 (under 10x lens)



Immunohistochemical of paraffin-embedded human lung using Catalog No:112278(LAMP3 antibody) at dilution of 1:50 (under 40x lens)