

# MDH1 antibody



Catalog Number: 112568

## Product name

MDH1 antibody

Recommended Dilution:

WB: 1:500-1:5000

## Specificity

Human, Mouse, Rat; other species not tested.

IP: 1:500-1:5000

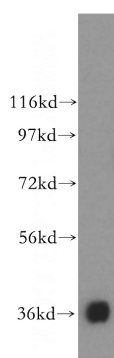
IHC: 1:50-1:500

## Antibody description

MDH1 Rabbit Polyclonal antibody. Positive IP detected in mouse liver tissue. Positive WB detected in HL-60 cells, HepG2 cells, human kidney tissue, human spleen tissue, mouse liver tissue. Positive FC detected in HepG2 cells. Positive IF detected in HepG2 cells. Positive IHC detected in human renal cell carcinoma tissue, human liver cancer tissue. Observed molecular weight by Western-blot: 36 kDa

IF: 1:10-1:100

## Validations



## Preparation

This antibody was obtained by immunization of MDH1 recombinant protein (Accession Number: NM\_005917). Purification method: Antigen affinity purified.

HL-60 cells were subjected to SDS PAGE followed by western blot with Catalog No:112568(MDH1 antibody) at dilution of 1:500

## Formulation

PBS with 0.02% sodium azide and 50% glycerol pH 7.3.

## Storage

Store at -20°C. DO NOT ALIQUOT

## Clonality

Polyclonal

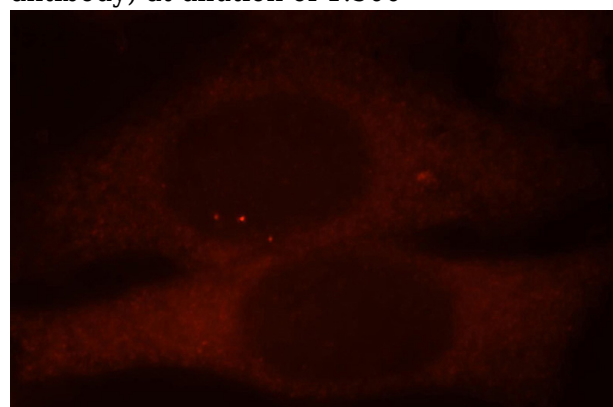
## Ig Type

Rabbit IgG

## Applications

ELISA, WB, IF, FC, IP, IHC

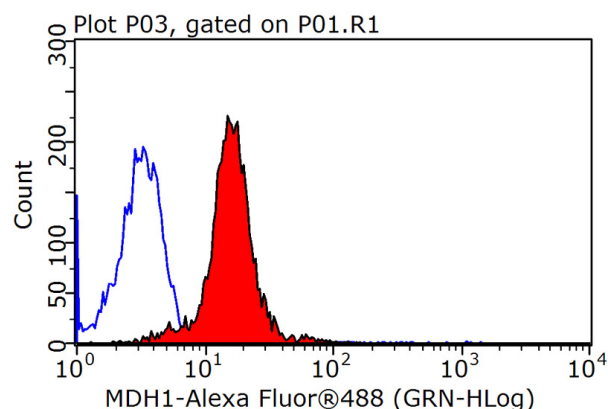
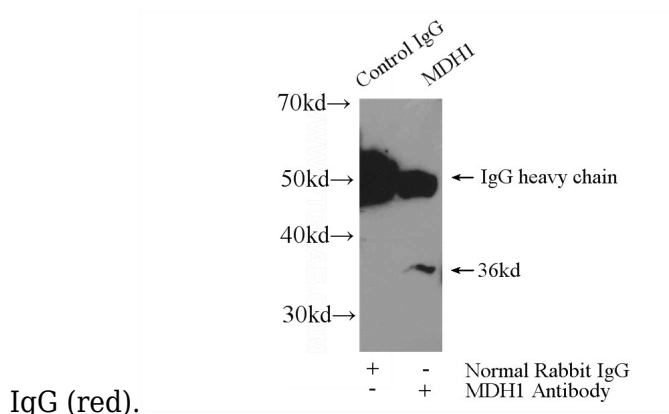
## Dilutions



Immunofluorescent analysis of HepG2 cells, using MDH1 antibody Catalog No:112568 at 1:25 dilution and Rhodamine-labeled goat anti-rabbit

# MDH1 antibody

Catalog Number: 112568



IP Result of anti-MDH1 (IP:Catalog No:112568, 4ug; Detection:Catalog No:112568 1:1000) with mouse liver tissue lysate 6400ug.

1X10<sup>6</sup> HepG2 cells were stained with 0.2ug MDH1 antibody (Catalog No:112568, red) and control antibody (blue). Fixed with 90% MeOH blocked with 3% BSA (30 min). Alexa Fluor 488-conjugated AffiniPure Goat Anti-Rabbit IgG(H+L) with dilution 1:1500.