

Anti-67kDa Laminin Receptor Rabbit antibody



Catalog Number: 166868

Product name

Rabbit IgG

Anti-67kDa Laminin Receptor Rabbit antibody

Applications

Specificity

WB, ICC/IF, FC, IP

Human, Mouse, Rat

Dilutions

Antibody description

WB: 1/1000

67kDa Laminin Receptor Rabbit polyclonal antibody

ICC/IF: 1/50

FC: 1/20

Preparation

IP: 1/20

Antigen: A synthetic peptide of human 67kDa Laminin Receptor

Validations

Formulation

Supplied in 50nM Tris-Glycine(pH 7.4), 0.15M NaCl, 40%Glycerol, 0.01% sodium azide and 0.05% BSA.

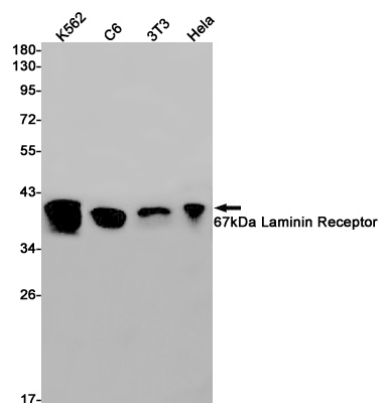
Storage

Store at -20°C. Stable for 12 months from date of receipt.

Clonality

Polyclonal

Ig Type



Western blot detection of 67kDa Laminin Receptor in K562,C6,3T3,Hela cell lysates using 67kDa Laminin Receptor Rabbit pAb(1:1000 diluted).Predicted band size:33kDa.Observed band size:40kDa.