

Anti-p21 Rabbit antibody

Catalog Number: 166958

Product name

Anti-p21 Rabbit antibody

Specificity

Human, Mouse, Rat

Antibody description

p21 Rabbit polyclonal antibody

Preparation

Antigen: A synthesized peptide derived from human p21

Formulation

Rabbit IgG in phosphate buffered saline , pH 7.4, 150mM NaCl, 0.02% sodium azide and 50% glycerol.

Storage

Store at 4°C short term. Store at -20°C long term. Avoid freeze / thaw cycle.

Clonality

Polyclonal

Ig Type

Rabbit IgG

Applications

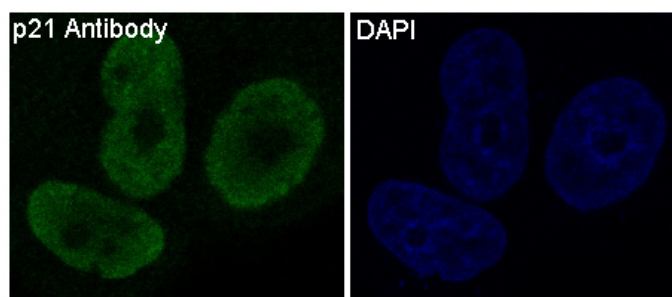
WB, ICC/IF

Dilutions

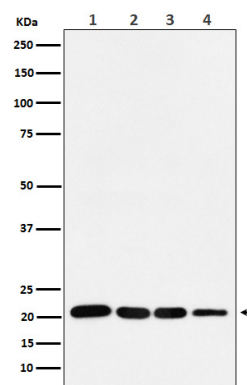
WB: 1/500-1/2000

ICC/IF: 1/50-1/200

Validations



Immunofluorescent analysis of MCF7 cells, using



p21 Antibody.

Western blot analysis of p21 in (1) MCF-7 cell lysate; (2) HeLa cell lysate. (3) LnCap cell lysate; (4) U87 MG cell lysate.