

# GPX3 antibody



Catalog Number: 111148

## Product name

GPX3 antibody

## Specificity

Human, Mouse, Rat; other species not tested.

## Antibody description

GPX3 Rabbit Polyclonal antibody. Positive WB detected in mouse kidney tissue, HEK-293 cells, human placenta tissue. Positive IF detected in HEK-293 cells. Observed molecular weight by Western-blot: 20-27 kDa

## Preparation

This antibody was obtained by immunization of GPX3 recombinant protein (Accession Number: NM\_002084). Purification method: Antigen affinity purified.

## Formulation

PBS with 0.1% sodium azide and 50% glycerol pH 7.3.

## Storage

Store at -20°C. DO NOT ALIQUOT

## Clonality

Polyclonal

## Ig Type

Rabbit IgG

## Applications

ELISA, WB, IF

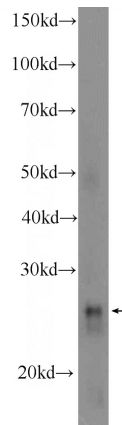
## Dilutions

Recommended Dilution:

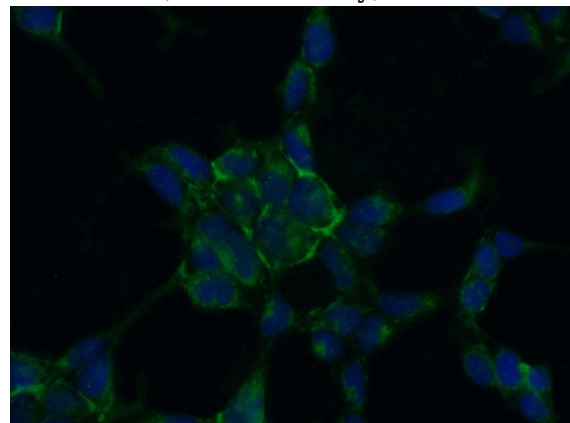
WB: 1:200-1:2000

IF: 1:50-1:500

## Validations



mouse kidney tissue were subjected to SDS PAGE followed by western blot with Catalog No:111148(GPX3 Antibody) at dilution of 1:600



Immunofluorescent analysis of (-20oc Ethanol) fixed HEK-293 cells using Catalog No:111148(GPX3 Antibody) at dilution of 1:50 and Alexa Fluor 488-conjugated AffiniPure Goat Anti-Rabbit IgG(H+L)