

# RSPH3 antibody



Catalog Number: 114848

## Product name

RSPH3 antibody

IHC: 1:20-1:200

IF: 1:20-1:200

## Specificity

Human, Mouse, Rat; other species not tested.

## Antibody description

RSPH3 Rabbit Polyclonal antibody. Positive IF detected in NIH/3T3 cells. Positive IHC detected in human brain tissue. Positive WB detected in human brain tissue, NIH/3T3 cells. Observed molecular weight by Western-blot: 70 kDa

## Preparation

This antibody was obtained by immunization of RSPH3 recombinant protein (Accession Number: BC050604). Purification method: Antigen affinity purified.

## Formulation

PBS with 0.02% sodium azide and 50% glycerol pH 7.3.

## Storage

Store at -20°C. DO NOT ALIQUOT

## Clonality

Polyclonal

## Ig Type

Rabbit IgG

## Applications

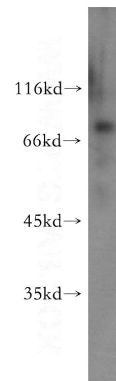
ELISA, WB, IHC, IF

## Dilutions

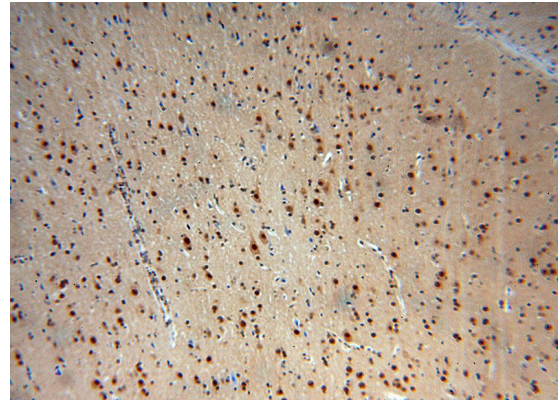
Recommended Dilution:

WB: 1:200-1:2000

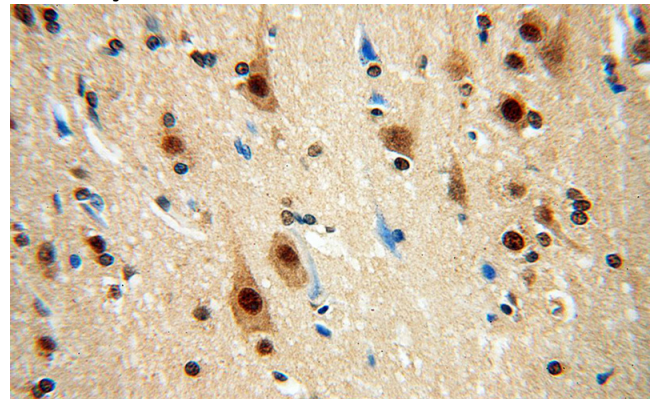
## Validations



human brain tissue were subjected to SDS PAGE followed by western blot with Catalog No:114848(RSPH3 antibody) at dilution of 1:600



Immunohistochemical of paraffin-embedded human brain using Catalog No:114848(RSPH3 antibody) at dilution of 1:50 (under 10x lens)



Immunohistochemical of paraffin-embedded human brain using Catalog No:114848(RSPH3

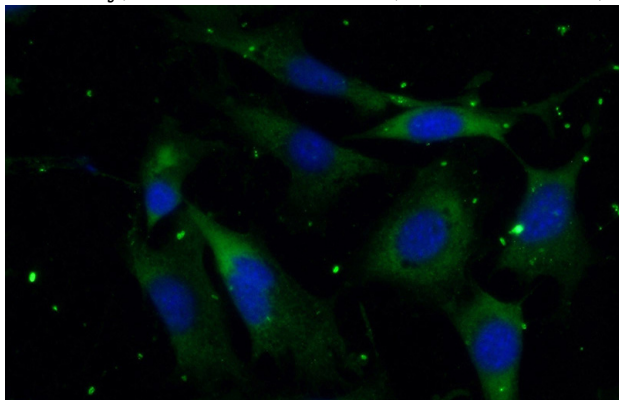
# RSPH3 antibody



Catalog Number: 114848

---

antibody) at dilution of 1:50 (under 40x lens)



Immunofluorescent analysis of (-20oc Ethanol)  
fixed NIH/3T3 cells using Catalog  
No:114848(RSPH3 Antibody) at dilution of 1:50  
and Alexa Fluor 488-conjugated AffiniPure Goat  
Anti-Rabbit IgG(H+L)