

# KIF5B antibody



Catalog Number: 112048

## Product name

KIF5B antibody

## Immunogen

[Human KIF5B Recombinant protein \(GST tag & His tag\)](#)

## Specificity

Human, Mouse, Rat; other species not tested.

## Antibody description

KIF5B Rabbit Polyclonal antibody. Positive WB detected in multi-cells, HeLa cells, HepG2 cells, Jurkat cells, mouse heart tissue, rat heart tissue. Positive IP detected in HepG2 cells. Positive IHC detected in human kidney tissue, human skin tissue. Observed molecular weight by Western-blot: 110-120kd

## Preparation

This antibody was obtained by immunization of KIF5B recombinant protein (Accession Number: XM\_047425202). Purification method: Antigen affinity purified.

## Formulation

PBS with 0.02% sodium azide and 50% glycerol pH 7.3.

## Storage

Store at -20°C. DO NOT ALIQUOT

## Clonality

Polyclonal

## Ig Type

Rabbit IgG

## Applications

ELISA, IHC, WB, IP

## Dilutions

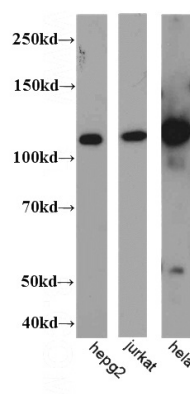
Recommended Dilution:

WB: 1:200-1:1000

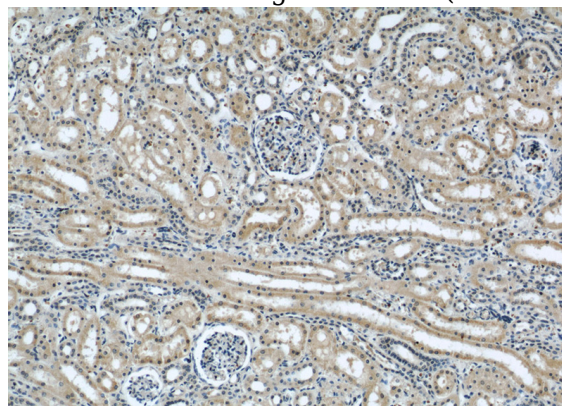
IP: 1:1000-1:10000

IHC: 1:20-1:200

## Validations



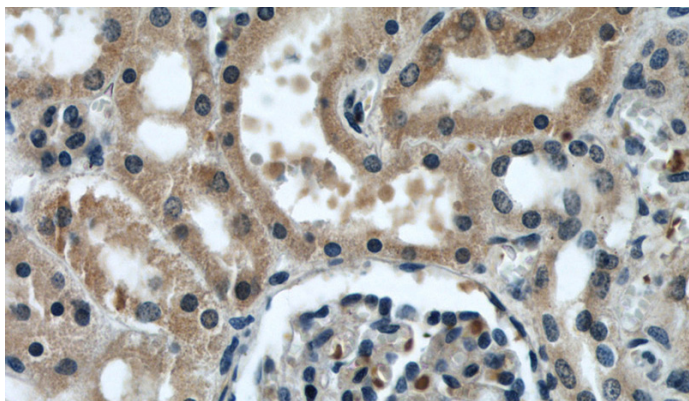
WB result of Catalog No:112048(KIF5B antibody).



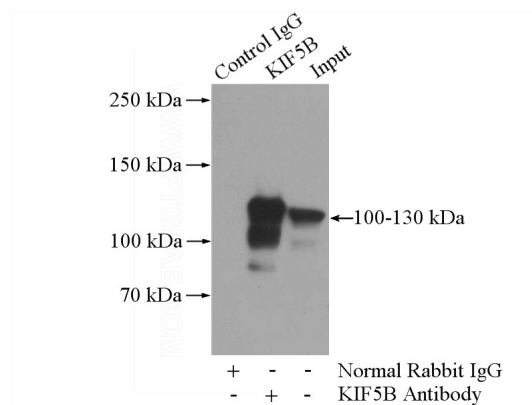
Immunohistochemical of paraffin-embedded human kidney using Catalog No:112048(KIF5B antibody) at dilution of 1:100 (under 10x lens)

# KIF5B antibody

Catalog Number: 112048



Immunohistochemical of paraffin-embedded human kidney using Catalog No:112048(KIF5B antibody) at dilution of 1:100 (under 40x lens)



IP Result of anti-KIF5B (IP:Catalog No:112048, 5ug; Detection:Catalog No:112048 1:2000) with HepG2 cells lysate 3600ug.