

VEGFC antibody



Catalog Number: 116738

Product name

VEGFC antibody

IHC: 1:50-1:500

IF: 1:20-1:200

Specificity

Human; other species not tested.

Antibody description

VEGFC Rabbit Polyclonal antibody. Positive IF detected in RAW 264.7 cells. Positive IHC detected in human prostate cancer tissue, human lung cancer tissue. Positive WB detected in MCF-7 cells. Observed molecular weight by Western-blot: 47-50 kDa

Preparation

This antibody was obtained by immunization of VEGFC recombinant protein (Accession Number: NM_005429). Purification method: Antigen affinity purified.

Formulation

PBS with 0.02% sodium azide and 50% glycerol pH 7.3.

Storage

Store at -20°C. DO NOT ALIQUOT

Clonality

Polyclonal

Ig Type

Rabbit IgG

Applications

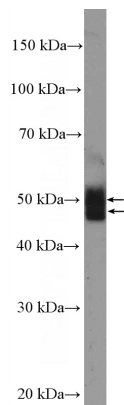
ELISA, IF, IHC, WB

Dilutions

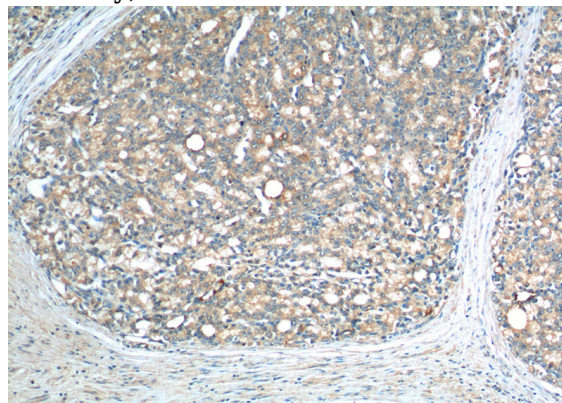
Recommended Dilution:

WB: 1:200-1:2000

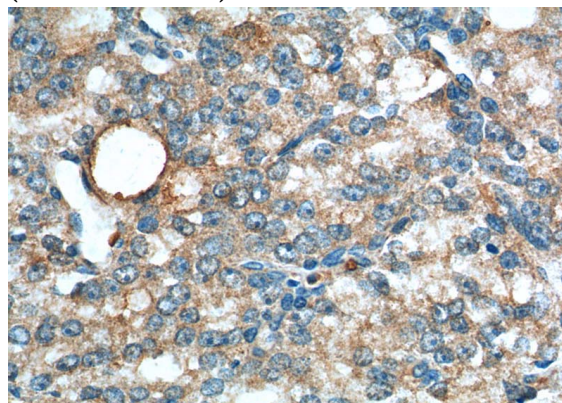
Validations



MCF-7 cells were subjected to SDS PAGE followed by western blot with Catalog No:116738(VEGFC Antibody) at dilution of 1:600



Immunohistochemistry of paraffin-embedded human prostate cancer tissue slide using Catalog No:116738(VEGFC Antibody) at dilution of 1:200 (under 10x lens).



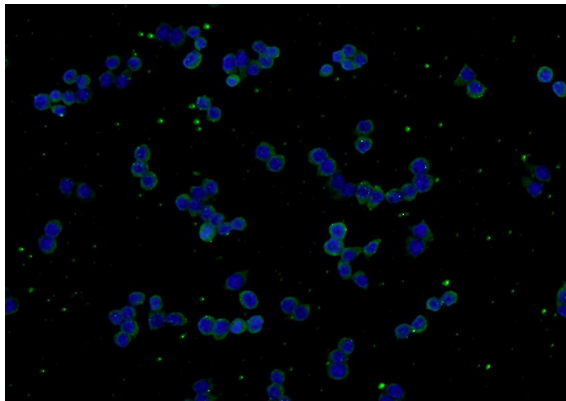
Immunohistochemistry of paraffin-embedded

VEGFC antibody



Catalog Number: 116738

human prostate cancer tissue slide using Catalog No:116738(VEGFC Antibody) at dilution of 1:200 (under 40x lens).



Immunofluorescent analysis of RAW 264.7 cells using Catalog No:116738(VEGFC Antibody) at dilution of 1:50 and Alexa Fluor 488-conjugated AffiniPure Goat Anti-Rabbit IgG(H+L)