

Anti-SQSTM1/p62 Rabbit antibody



Catalog Number: 167338

Product name

Anti-SQSTM1/p62 Rabbit antibody

Specificity

Human, Mouse, Rat

Antibody description

SQSTM1/p62 Rabbit polyclonal antibody

Preparation

Antigen: A synthetic peptide of human SQSTM1/p62

Formulation

Supplied in 50nM Tris-Glycine(pH 7.4), 0.15M NaCl, 40%Glycerol, 0.01% sodium azide and 0.05% BSA.

Storage

Store at -20°C. Stable for 12 months from date of receipt.

Clonality

Polyclonal

Ig Type

Rabbit IgG

Applications

WB, ICC/IF, FC

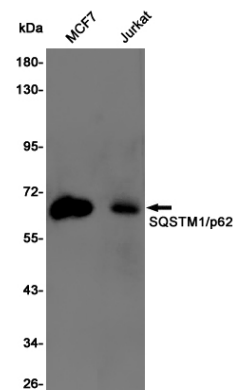
Dilutions

WB: 1/2000-1/10000

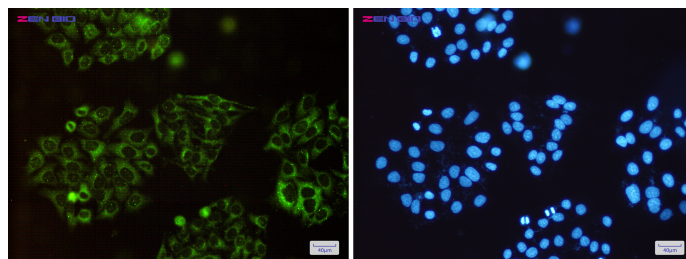
ICC/IF: 1/20-1/100

FC: 1/20

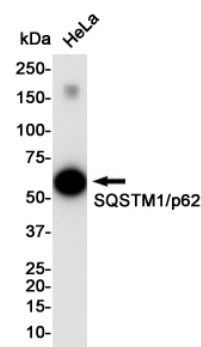
Validations



Western blot detection of SQSTM1/p62 in MCF7,Jurkat cell lysates using SQSTM1/p62 Rabbit pAb(1:1000 diluted).Predicted band size:48KDa.Observed band size:62KDa.



Immunocytochemistry of SQSTM1/p62(green) in Hela cells using SQSTM1/p62 Rabbit pAb at



dilution 1/50, and DAPI(blue)

Western blot detection of SQSTM1/p62 in Hela cell lysates using SQSTM1/p62 Rabbit pAb(1:1000 diluted).Predicted band size:48KDa.Observed band size:62KDa.