

CBP,EIF4E antibody



Catalog Number: 108938

Product name

CBP,EIF4E antibody

IHC: 1:20-1:200

IF: 1:10-1:100

Specificity

Human,Mouse,Rat; other species not tested.

Antibody description

CBP,EIF4E Rabbit Polyclonal antibody. Positive IHC detected in human breast cancer tissue, human gliomas tissue. Positive IF detected in HepG2 cells. Positive FC detected in HepG2 cells. Positive WB detected in HEK-293 cells. Observed molecular weight by Western-blot: 25 kDa, 50 kDa

Preparation

This antibody was obtained by immunization of CBP,EIF4E recombinant protein (Accession Number: NM_001968). Purification method: Antigen affinity purified.

Formulation

PBS with 0.1% sodium azide and 50% glycerol pH 7.3.

Storage

Store at -20°C. DO NOT ALIQUOT

Clonality

Polyclonal

Ig Type

Rabbit IgG

Applications

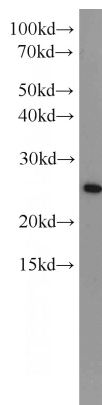
ELISA, WB, IHC, IF, FC

Dilutions

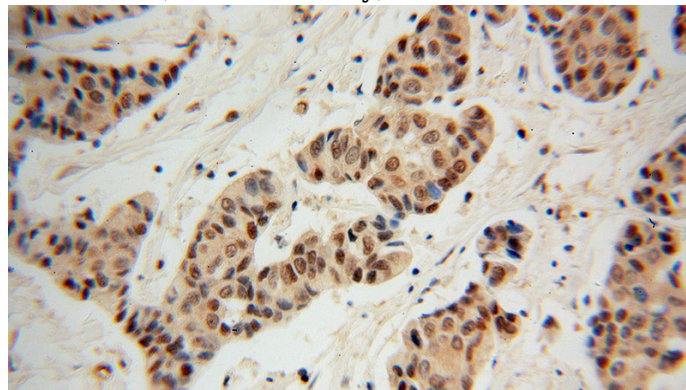
Recommended Dilution:

WB: 1:500-1:5000

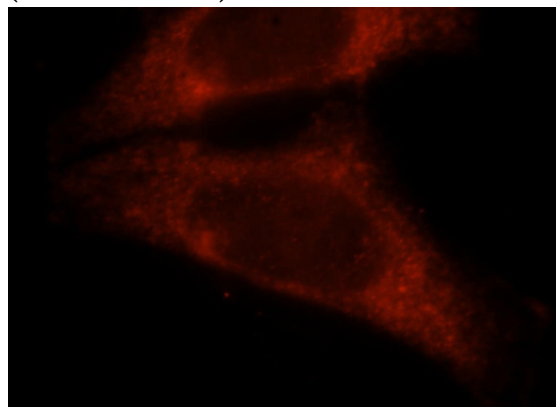
Validations



HEK-293 cells were subjected to SDS PAGE followed by western blot with Catalog No:108938(EIF4E antibody) at dilution of 1:1000



Immunohistochemical of paraffin-embedded human breast cancer using Catalog No:108938(EIF4E antibody) at dilution of 1:100 (under 40x lens)



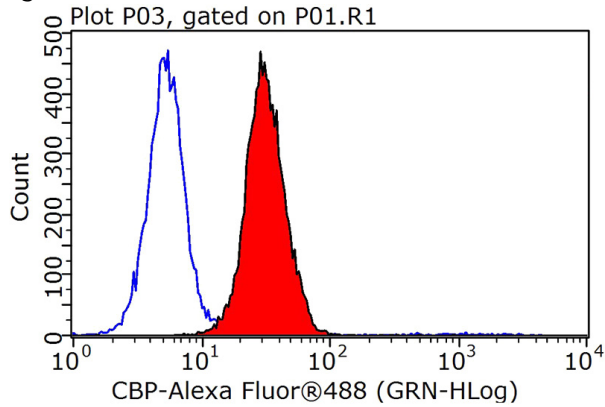
Immunofluorescent analysis of HepG2 cells, using

CBP,EIF4E antibody



Catalog Number: 108938

EIF4E antibody Catalog No:108938 at 1:25 dilution and Rhodamine-labeled goat anti-rabbit IgG (red).



1X10⁶ HepG2 cells were stained with 0.2ug EIF4E antibody (Catalog No:108938, red) and control antibody (blue). Fixed with 90% MeOH blocked with 3% BSA (30 min). Alexa Fluor 488-conjugated AffiniPure Goat Anti-Rabbit IgG(H+L) with dilution 1:1000.