

# P16-INK4A antibody



Catalog Number: 113538

## Product name

P16-INK4A antibody

Recommended Dilution:

WB: 1:500-1:5000

## Specificity

Human; other species not tested.

IP: 1:500-1:5000

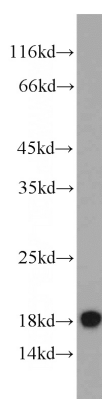
IHC: 1:50-1:500

## Antibody description

P16-INK4A Rabbit Polyclonal antibody. Positive IF detected in SH-SY5Y cells. Positive IHC detected in human lung cancer tissue, human cervical cancer tissue, human lymphoma tissue. Positive FC detected in HeLa cells. Positive IP detected in HEK-293 cells. Positive WB detected in HEK-293 cells, HeLa cells, PC-3 cells. Observed molecular weight by Western-blot: 16-18 kDa

IF: 1:20-1:200

## Validations



## Preparation

This antibody was obtained by immunization of P16-INK4A recombinant protein (Accession Number: BC021998). Purification method: Antigen affinity purified.

HEK-293 cells were subjected to SDS PAGE followed by western blot with Catalog No:113538(P16 antibody) at dilution of 1:1000

## Formulation

PBS with 0.1% sodium azide and 50% glycerol pH 7.3.

## Storage

Store at -20°C. DO NOT ALIQUOT

## Clonality

Polyclonal

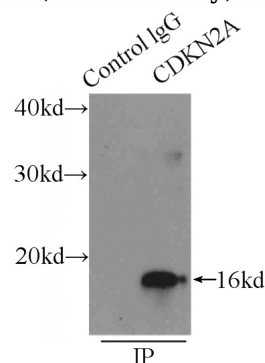
## Ig Type

Rabbit IgG

## Applications

ELISA, WB, IF, IP, FC, IHC

## Dilutions

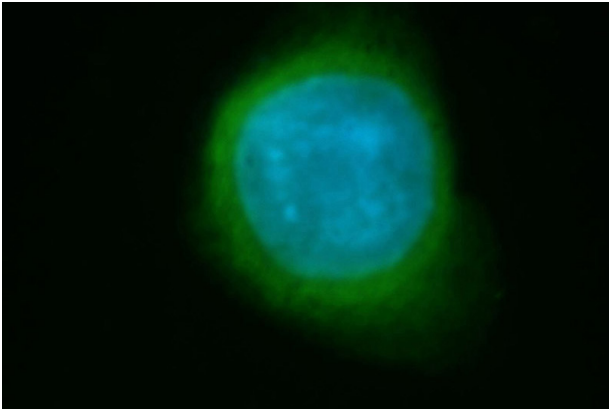


IP Result of anti-P16 (IP:Catalog No:113538, 4ug; Detection:Catalog No:113538 1:1000) with HEK-293 cells lysate 4500ug.

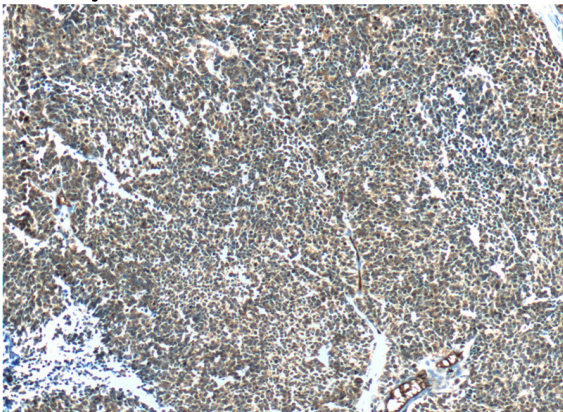
# P16-INK4A antibody



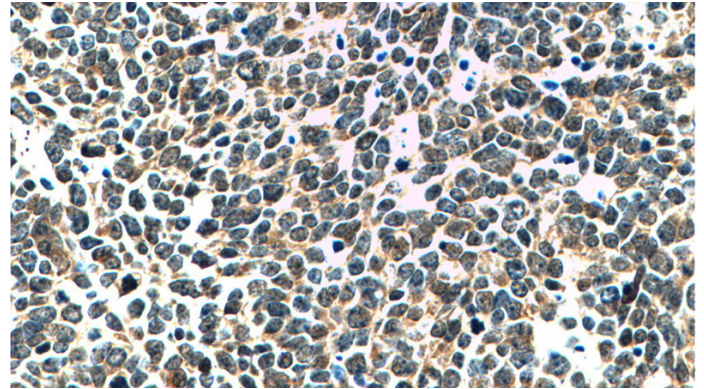
Catalog Number: 113538



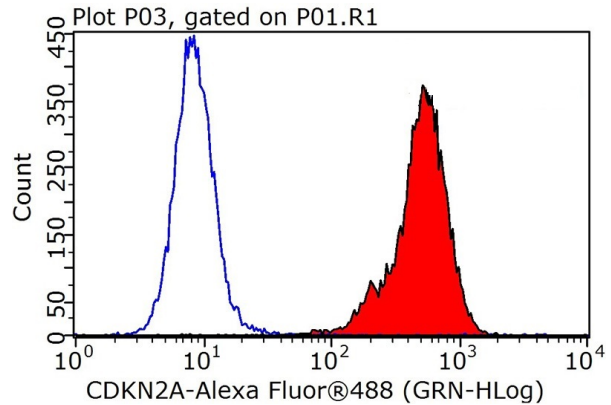
Immunofluorescent analysis of SH-SY5Y cells, using CDKN2A antibody Catalog No:113538 at 1:50 dilution and FITC-labeled donkey anti-rabbit IgG(green). Blue pseudocolor = DAPI (fluorescent DNA dye).



Immunohistochemistry of paraffin-embedded human lung cancer tissue slide using Catalog No:113538(P16-INK4A Antibody) at dilution of 1:200 (under 10x lens).



Immunohistochemistry of paraffin-embedded human lung cancer tissue slide using Catalog No:113538(P16-INK4A Antibody) at dilution of 1:200 (under 40x lens).



1X10<sup>6</sup> HeLa cells were stained with .2ug P16-INK4A antibody (Catalog No:113538, red) and control antibody (blue). Fixed with 90% MeOH blocked with 3% BSA (30 min). Alexa Fluor 488-conjugated AffiniPure Goat Anti-Rabbit IgG(H+L) with dilution 1:1000.