

TRAM1 antibody



Catalog Number: 116328

Product name

TRAM1 antibody

Immunogen

[Human TRAM1 Recombinant protein \(GST tag & His tag\)](#)

Specificity

Human, Mouse, Rat; other species not tested.

Antibody description

TRAM1 Rabbit Polyclonal antibody. Positive WB detected in K-562 cells, HeLa cells, Jurkat cells, PC-3 cells. Positive IHC detected in human prostate cancer tissue. Positive IF detected in PC-3 cells. Observed molecular weight by Western-blot: 43 kDa

Preparation

This antibody was obtained by immunization of TRAM1 recombinant protein (Accession Number: NM_014294). Purification method: Antigen affinity purified.

Formulation

PBS with 0.1% sodium azide and 50% glycerol pH 7.3.

Storage

Store at -20°C. DO NOT ALIQUOT

Clonality

Polyclonal

Ig Type

Rabbit IgG

Applications

ELISA, WB, IHC, IF

Dilutions

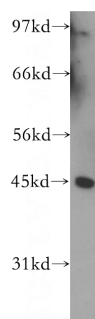
Recommended Dilution:

WB: 1:500-1:5000

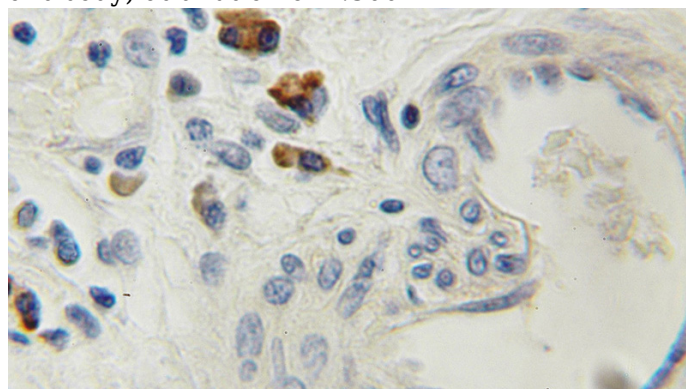
IHC: 1:20-1:200

IF: 1:10-1:100

Validations



K-562 cells were subjected to SDS PAGE followed by western blot with Catalog No:116328(TRAM1 antibody) at dilution of 1:300

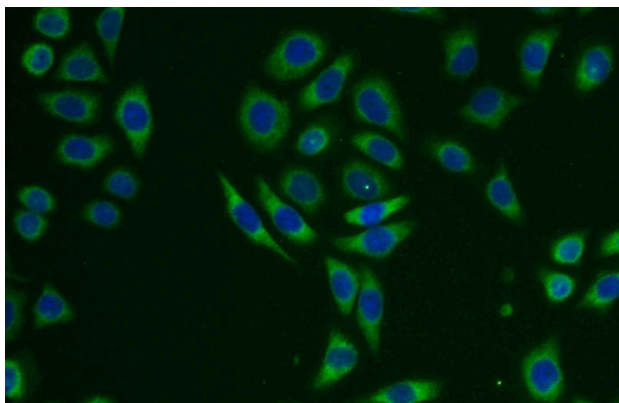


Immunohistochemical of paraffin-embedded human prostate cancer using Catalog No:116328(TRAM1 antibody) at dilution of 1:50 (under 10x lens)

TRAM1 antibody



Catalog Number: 116328



Immunofluorescent analysis of PC-3 cells using Catalog No:116328(TRAM1 Antibody) at dilution of 1:25 and Alexa Fluor 488-conjugated AffiniPure Goat Anti-Rabbit IgG(H+L)