

EXO1 Polyclonal Antibody

Catalog Number: 163628

Product name

EXO1 Polyclonal Antibody

Specificity

Human

Antibody description

Polyclonal antibody to EXO1

Preparation

Antigen: Recombinant fusion protein containing a sequence corresponding to amino acids 601-846 of human EXO1 (NP_006018.4).

Formulation

PBS with 0.02% sodium azide, 50% glycerol, pH7.3.

Storage

Store at -20°C. Avoid freeze / thaw cycles.

Clonality

Polyclonal

Ig Type

Rabbit IgG

Applications

WB, IHC, IF

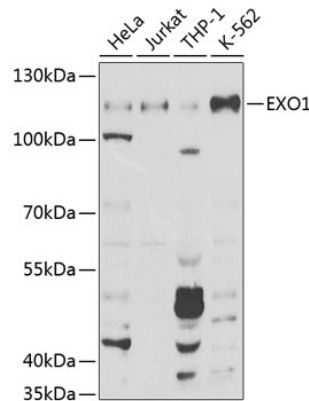
Dilutions

WB 1:500 - 1:2000

IHC 1:50 - 1:100

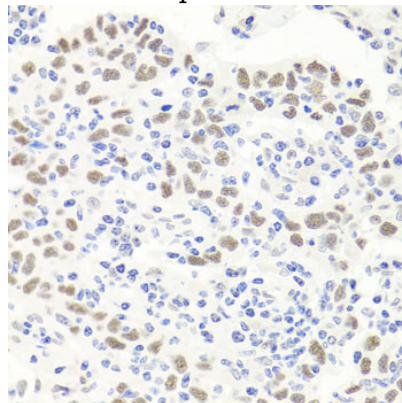
IF 1:50 - 1:200

Validations



Western blot - EXO1 Polyclonal Antibody

Western blot analysis of extracts of various cell lines, using EXO1 Antibody at 1:1000 dilution. Secondary antibody: HRP Goat Anti-Rabbit IgG (H+L) at 1:10000 dilution. Lysates/proteins: 25ug per lane. Blocking buffer: 3% nonfat dry milk in TBST. Detection: ECL Basic Kit. Exposure time: 30s.



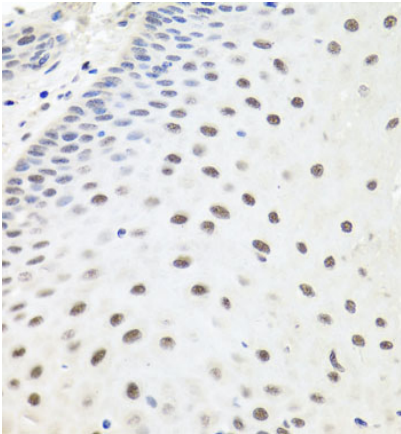
Immunohistochemistry - EXO1 Polyclonal Antibody

Immunohistochemistry of paraffin-embedded human esophageal cancer using EXO1 antibody at dilution of 1:100 (40x lens).

EXO1 Polyclonal Antibody

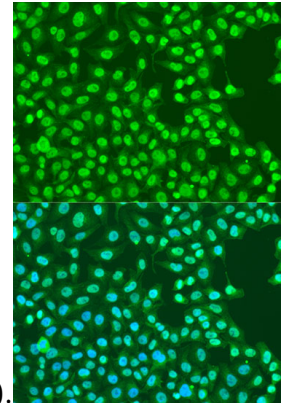


Catalog Number: 163628



Immunohistochemistry - EXO1 Polyclonal Antibody

Immunohistochemistry of paraffin-embedded human lung cancer using EXO1 antibody at



dilution of 1:100 (40x lens).

Immunohistochemistry - EXO1 Polyclonal Antibody

Immunohistochemistry of paraffin-embedded human gastric cancer using EXO1 antibody at dilution of 1:100 (40x lens).