

# MIPEP antibody



Catalog Number: 112628

## Product name

MIPEP antibody

## Specificity

Human; other species not tested.

## Antibody description

MIPEP Rabbit Polyclonal antibody. Positive WB detected in HepG2 cells, MCF7 cells. Positive IHC detected in human prostate cancer tissue. Observed molecular weight by Western-blot: 70-80 kDa

## Preparation

This antibody was obtained by immunization of MIPEP recombinant protein (Accession Number: NM\_005932). Purification method: Antigen affinity purified.

## Formulation

PBS with 0.1% sodium azide and 50% glycerol pH 7.3.

## Storage

Store at -20°C. DO NOT ALIQUOT

## Clonality

Polyclonal

## Ig Type

Rabbit IgG

## Applications

ELISA, IHC, WB

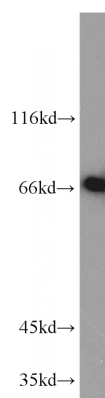
## Dilutions

Recommended Dilution:

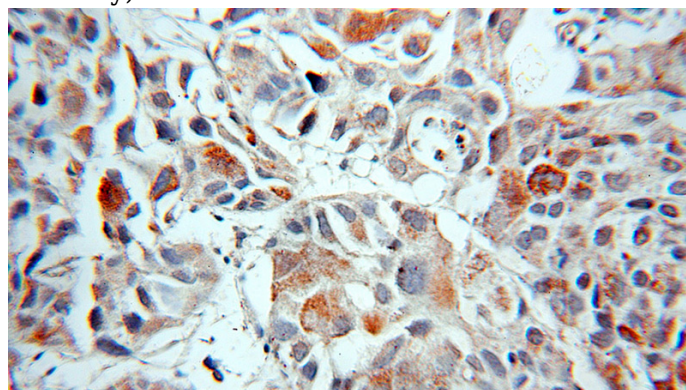
WB: 1:500-1:5000

IHC: 1:20-1:200

## Validations



HepG2 cells were subjected to SDS PAGE followed by western blot with Catalog No:112628(MIPEP antibody) at dilution of 1:1000



Immunohistochemical of paraffin-embedded human prostate cancer using Catalog No:112628(MIPEP antibody) at dilution of 1:50 (under 10x lens)