

Anti-CREB (1E9) Mouse antibody



Catalog Number: 168228

Product name

Anti-CREB (1E9) Mouse antibody

Specificity

Human, Rat

Antibody description

CREB (1E9) Mouse monoclonal antibody

Preparation

Antigen: Purified recombinant human CREB protein fragments expressed in E.coli.

Formulation

Ascites containing with 0.03% Proclin300 and 50% glycerol.

Storage

Store at 4°C short term. Store at -20°C long term. Avoid freeze / thaw cycle.

Clonality

Monoclonal

Ig Type

Mouse IgG1

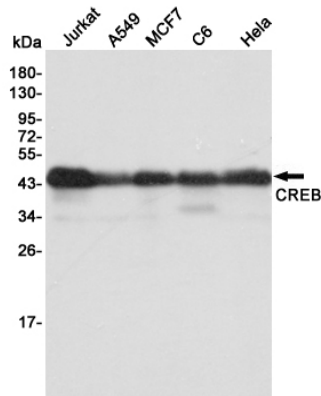
Applications

WB

Dilutions

WB: 1/1000

Validations



Western blot detection of CREB in Jurkat, A549, MCF7, C6 and HeLa cell lysates using CREB mouse mAb (dilution 1:1000). Predicted band size: 46 kDa. Observed band size: 43 kDa.