

# CHD3 Monoclonal Antibody



Catalog Number: 166228

## Product name

CHD3 Monoclonal Antibody

## Specificity

Human

## Antibody description

Monoclonal antibody to CHD3

## Preparation

Antigen: Recombinant protein of human CHD3

## Formulation

PBS with 0.02% sodium azide, 50% glycerol, pH7.3.

## Storage

Store at -20°C. Avoid freeze / thaw cycles.

## Clonality

Monoclonal

## Ig Type

Mouse IgG

## Applications

WB, IHC, FC

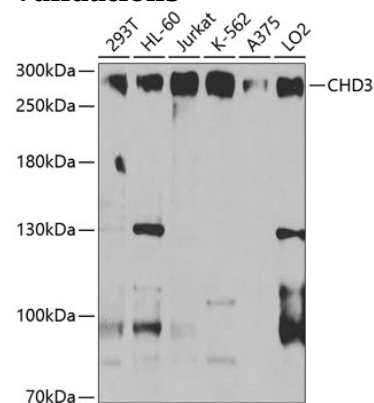
## Dilutions

WB 1:500 - 1:2000

IHC 1:50 - 1:200

FC 1:20 - 1:50

## Validations



## Western blot - CHD3 Monoclonal Antibody

Western blot analysis of extracts of various cell lines, using CHD3 antibody at 1:1000 dilution. Secondary antibody: HRP Goat Anti-Mouse IgG (H+L) at 1:10000 dilution. Lysates/proteins: 25ug per lane. Blocking buffer: 3% nonfat dry milk in TBST. Detection: ECL Enhanced Kit. Exposure time: 10s.