

Anti-PHF8 antibody



Catalog Number: 175128

Product name

Anti-PHF8 antibody

Specificity

Human, Mouse, Rat

Antibody description

Rabbit polyclonal antibody to PHF8

Preparation

This antigen of this antibody was recombinant protein within human phf8 aa 150-350.

Formulation

Liquid, 1*PBS (pH7.4), 0.2% BSA, 50% Glycerol.
Preservative: 0.05% Sodium Azide.

Storage

Store at +4°C after thawing. Aliquot store at -20°C. Avoid repeated freeze / thaw cycles.

Clonality

Polyclonal

Ig Type

Rabbit IgG

Applications

WB, ICC, IHC-P, FC

Dilutions

WB: 1:500-1:2,000

ICC: 1:50-1:200

IHC-P: 1:50-1:200

FC: 1:50-1:100

Validations

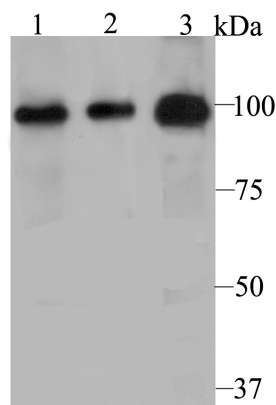


Fig1: Western blot analysis of PHF8 on different cell lysate using anti-PHF8 antibody at 1/500 dilution.; Positive control; Lane 1: PC-3M; Lane 2: A431; Lane 3: Human kidney tissue

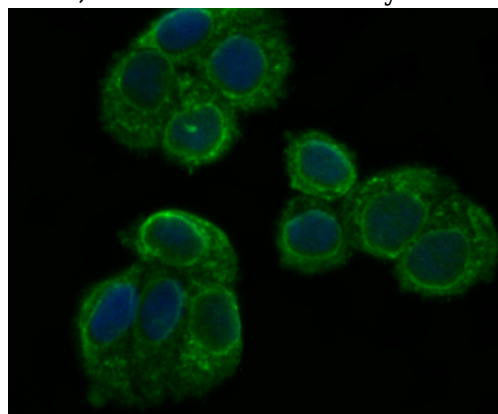


Fig2: ICC staining PHF8 in HeLa cells (green). The nuclear counter stain is DAPI (blue). Cells were fixed in paraformaldehyde, permeabilised with 0.25% Triton X100/PBS.

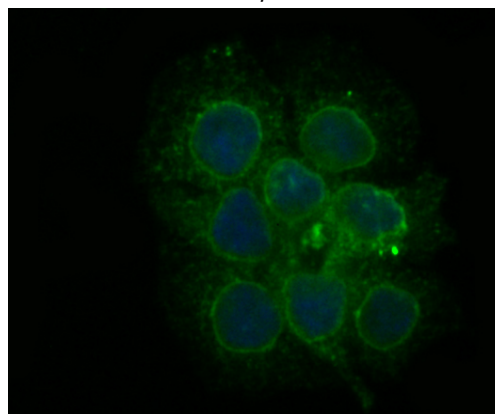


Fig3: ICC staining PHF8 in JAR cells (green). The nuclear counter stain is DAPI (blue). Cells were fixed in paraformaldehyde, permeabilised with 0.25% Triton X100/PBS.

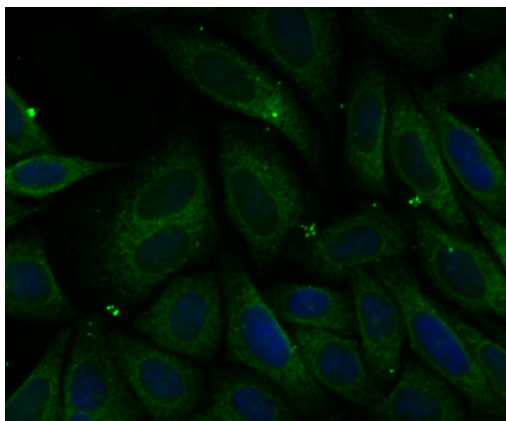


Fig4: ICC staining PHF8 in SiHa cells (green). The nuclear counter stain is DAPI (blue). Cells were fixed in paraformaldehyde, permeabilised with 0.25% Triton X100/PBS.

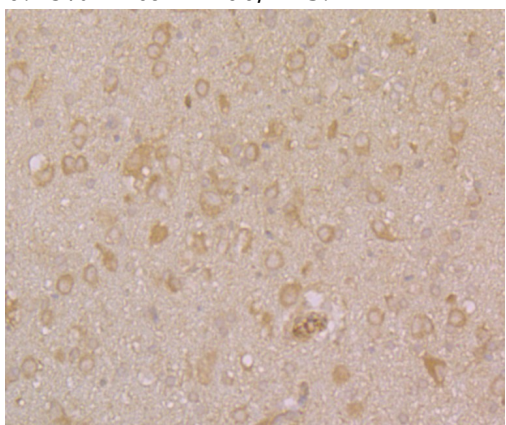


Fig5: Immunohistochemical analysis of paraffin-embedded rat brain tissue using anti-PHF8 antibody. Counter stained with hematoxylin.

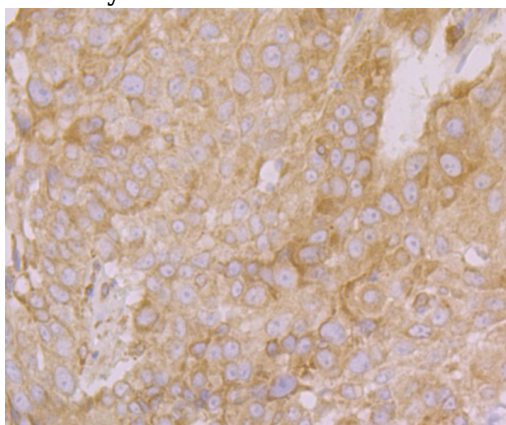


Fig6: Immunohistochemical analysis of paraffin-embedded human lung cancer tissue using anti-PHF8 antibody. Counter stained with hematoxylin.

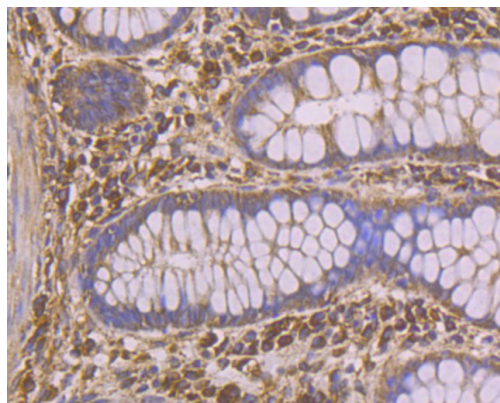


Fig7: Immunohistochemical analysis of paraffin-embedded human colon tissue using anti-PHF8 antibody. Counter stained with hematoxylin.

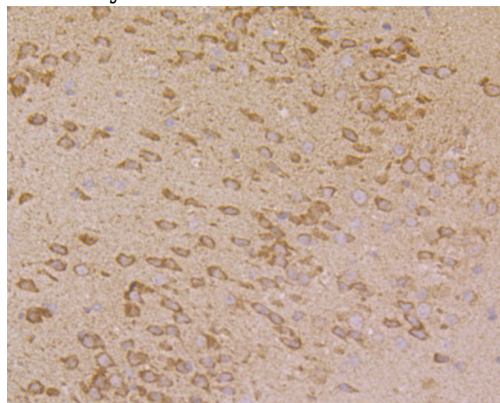


Fig8: Immunohistochemical analysis of paraffin-embedded mouse brain tissue using anti-PHF8 antibody. Counter stained with hematoxylin.

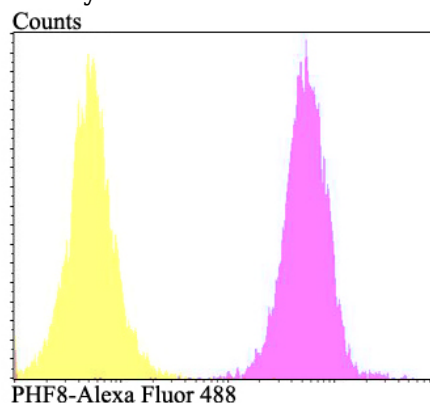


Fig9: Flow cytometric analysis of SiHa cells with PHF8 antibody at 1/100 dilution (fuchsia) compared with an unlabelled control (cells without incubation with primary antibody; yellow). Alexa Fluor 488-conjugated goat anti-rabbit IgG was used as the second