

# Anti-Phospho-MCM2 (Ser108) Rabbit antibody



Catalog Number: 168828

**Product name** WB, ICC/IF, IP

Anti-Phospho-MCM2 (Ser108) Rabbit antibody **Dilutions**

**Specificity** 1:1000

Human, Mouse, Rat 1:50

**Antibody description** 1:20

Phospho-MCM2 (Ser108) Rabbit monoclonal antibody

## Preparation

Antigen: A synthetic phosphopeptide corresponding to residues surrounding Ser108 of human MCM2

## Formulation

Supplied in 50nM Tris-Glycine(pH 7.4), 0.15M NaCl, 40%Glycerol, 0.01% sodium azide and 0.05% BSA.

## Storage

Store at 4°C short term. Aliquot and store at -20°C long term. Avoid freeze / thaw cycle.

## Clonality

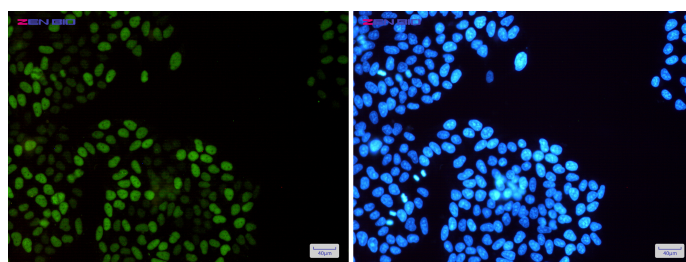
Monoclonal

## Ig Type

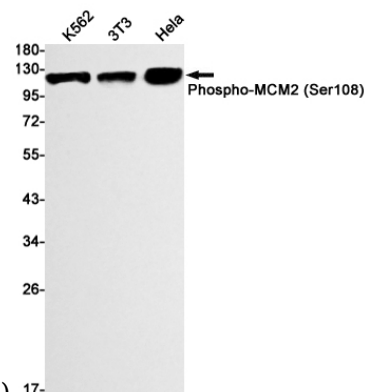
Rabbit IgG

## Applications

## Validations



Immunocytochemistry of MCM2 (Phospho-Ser108)(green) in HeLa cells using MCM2 (Phospho-Ser108) Rabbit mAb at dilution 1/50,



and DAPI(blue)

Western blot detection of Phospho-MCM2 (Ser108) in K562,3T3,HeLa cell lysates using Phospho-MCM2 (Ser108) Rabbit mAb(1:1000 diluted).Predicted band size:102kDa.Observed band size:125kDa.