

MAP7 antibody



Catalog Number: 112428

Product name

MAP7 antibody

Recommended Dilution:

WB: 1:500-1:5000

Immunogen

IP: 1:200-1:2000

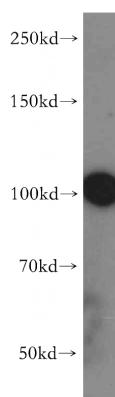
[Human MAP7 Recombinant protein \(GST tag & His tag\)](#)

IF: 1:10-1:100

Specificity

Human, Mouse, Rat; other species not tested.

Validations



Antibody description

MAP7 Rabbit Polyclonal antibody. Positive IF detected in HepG2 cells, Hela cells. Positive IP detected in HeLa cells. Positive WB detected in A549 cells, A431 cells, HeLa cells. Observed molecular weight by Western-blot: 100kd

Preparation

This antibody was obtained by immunization of MAP7 recombinant protein (Accession Number: NM_003980). Purification method: Antigen affinity purified.

A549 cells were subjected to SDS PAGE followed by western blot with Catalog No:112428(MAP7 antibody) at dilution of 1:500

Formulation

PBS with 0.02% sodium azide and 50% glycerol pH 7.3.

Storage

Store at -20°C. DO NOT ALIQUOT

Clonality

Polyclonal

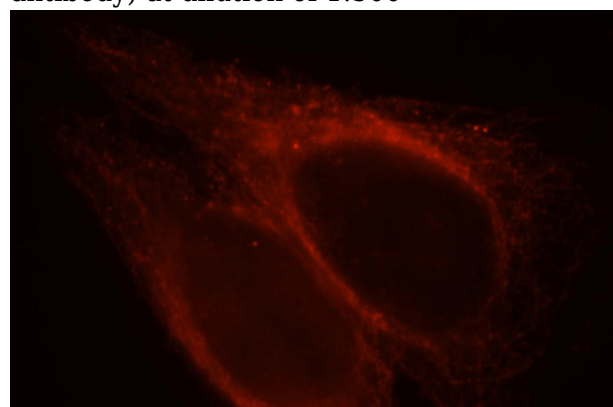
Ig Type

Rabbit IgG

Applications

ELISA, WB, IF, IP

Dilutions

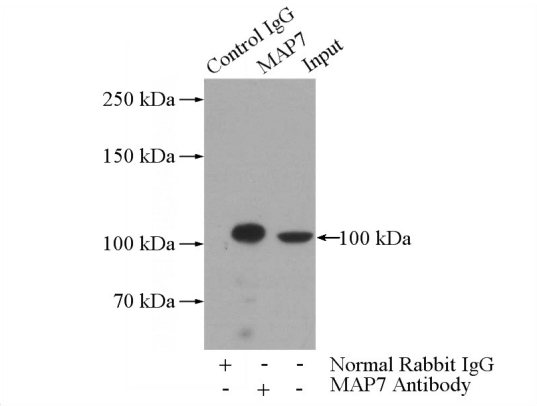


Immunofluorescent analysis of HepG2 cells, using MAP7 antibody Catalog No:112428 at 1:25 dilution and Rhodamine-labeled goat anti-rabbit

MAP7 antibody

Catalog Number: 112428

IgG (red).



IP Result of anti-MAP7 (IP:Catalog No:112428, 4ug; Detection:Catalog No:112428 1:500) with HeLa cells lysate 2000ug.