

# TGM1 antibody



Catalog Number: 116028

## Product name

TGM1 antibody

WB: 1:200-1:2000

IP: 1:500-1:5000

## Specificity

Human, Mouse, Rat; other species not tested.

IHC: 1:50-1:600

## Antibody description

TGM1 Rabbit Polyclonal antibody. Positive IHC detected in human cervix tissue, human cervical cancer tissue, human skin tissue. Positive IP detected in mouse kidney tissue. Positive WB detected in mouse kidney tissue, mouse thymus tissue. Observed molecular weight by Western-blot: 90kd

## Preparation

This antibody was obtained by immunization of TGM1 recombinant protein (Accession Number: NM\_000359). Purification method: Antigen affinity purified.

## Formulation

PBS with 0.1% sodium azide and 50% glycerol pH 7.3.

## Storage

Store at -20°C. DO NOT ALIQUOT

## Clonality

Polyclonal

## Ig Type

Rabbit IgG

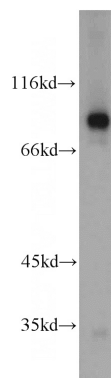
## Applications

ELISA, IP, WB, IHC

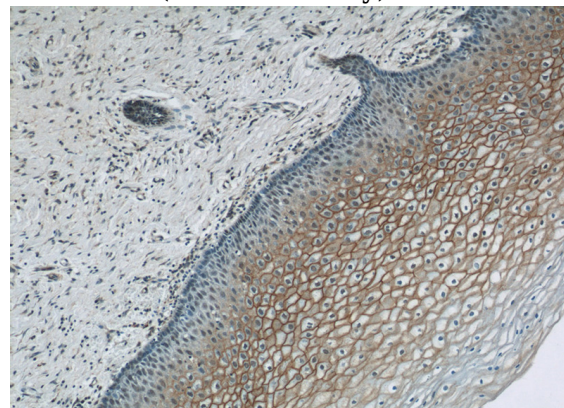
## Dilutions

Recommended Dilution:

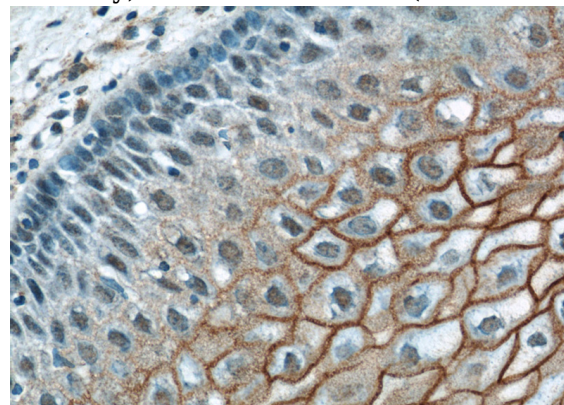
## Validations



mouse kidney tissue were subjected to SDS PAGE followed by western blot with Catalog No:116028(TGM1 antibody) at dilution of 1:500



Immunohistochemical of paraffin-embedded human cervix using Catalog No:116028(TGM1 antibody) at dilution of 1:200 (under 10x lens)



# TGM1 antibody



Catalog Number: 116028

Immunohistochemical of paraffin-embedded human cervix using Catalog No:116028(TGM1 antibody) at dilution of 1:200 (under 40x lens)

IP Result of anti-TGM1 (IP:Catalog No:116028, 4ug; Detection:Catalog No:116028 1:1000) with mouse kidney tissue lysate 4000ug.

