

Anti-KMT6/EZH2 Rabbit antibody



Catalog Number: 167918

Product name

Anti-KMT6/EZH2 Rabbit antibody

Ig Type

Rabbit IgG

Specificity

Human

Applications

WB

Antibody description

KMT6/EZH2 Rabbit monoclonal antibody

Dilutions

WB: 1/1000

Preparation

Antigen: Recombinant protein of human KMT6/EZH2

Validations

Formulation

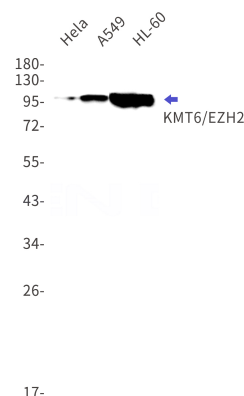
50nM Tris-Glycine(pH 7.4), 0.15M NaCl, 40%Glycerol, 0.01% sodium azide and 0.05% BSA

Storage

Store at 4°C short term. Store at -20°C long term. Avoid freeze / thaw cycle.

Clonality

Monoclonal



Western blot detection of KMT6/EZH2 in HeLa,A549,HL-60 cell lysates using KMT6/EZH2 Rabbit mAb(1:1000 diluted).Predicted band size:85kDa.Observed band size:98kDa.