

Anti-SFRP1 antibody



Catalog Number: 175118

Product name

Anti-SFRP1 antibody

Specificity

Human, Mouse, Rat

Antibody description

Rabbit polyclonal antibody to SFRP1

Preparation

This antigen of this antibody was peptide

Formulation

Liquid, 1*PBS (pH7.4), 0.2% BSA, 50% Glycerol.
Preservative: 0.05% Sodium Azide.

Storage

Store at +4°C after thawing. Aliquot store at -20°C or -80°C. Avoid repeated freeze / thaw cycles.

Clonality

Polyclonal

Ig Type

Rabbit IgG

Applications

WB, ICC, IHC-P, FC

Dilutions

WB: 1:500-1:1,000

ICC: 1:100-1:500

IHC-P: 1:50-1:200

FC: 1:50-1:100

Validations

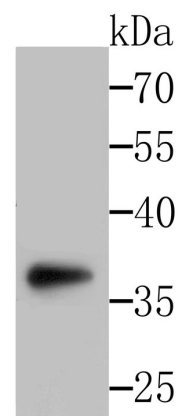
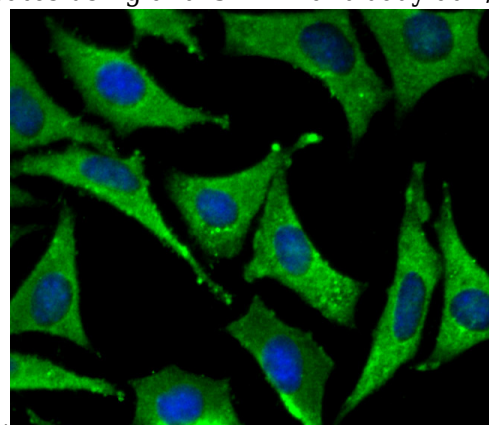


Fig1: Western blot analysis of SFRP1 on SH-SY-5Y cells lysates using anti-SFRP1 antibody at 1/500



dilution.

Fig2: ICC staining SFRP1 in SH-SY-5Y cells (green). The nuclear counter stain is DAPI (blue). Cells were fixed in paraformaldehyde, permeabilised with 0.25% Triton X100/PBS.

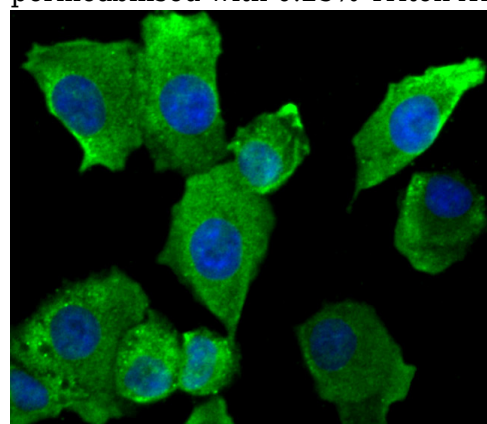


Fig3: ICC staining SFRP1 in A549 cells (green). The nuclear counter stain is DAPI (blue). Cells were fixed in paraformaldehyde, permeabilised with 0.25% Triton X100/PBS.

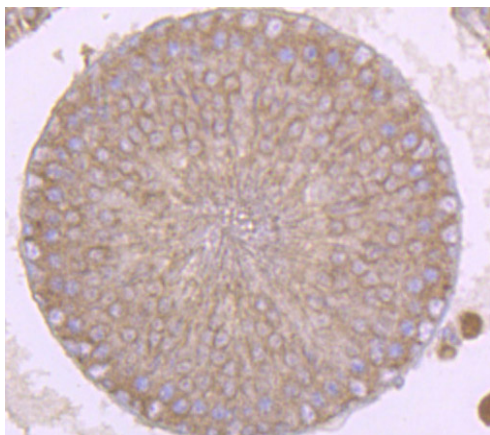


Fig4: Immunohistochemical analysis of paraffin-embedded rat testis tissue using anti-SFRP1 antibody. Counter stained with hematoxylin.

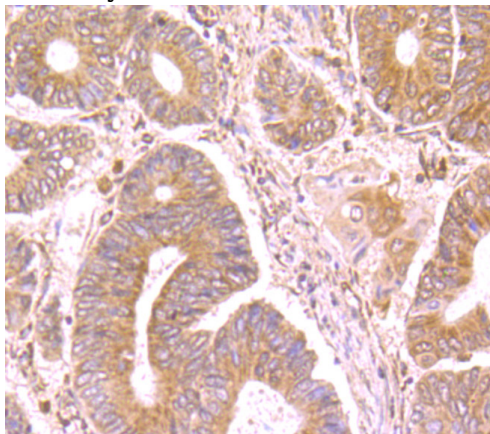


Fig5: Immunohistochemical analysis of paraffin-embedded human colon cancer tissue using anti-SFRP1 antibody. Counter stained with hematoxylin.

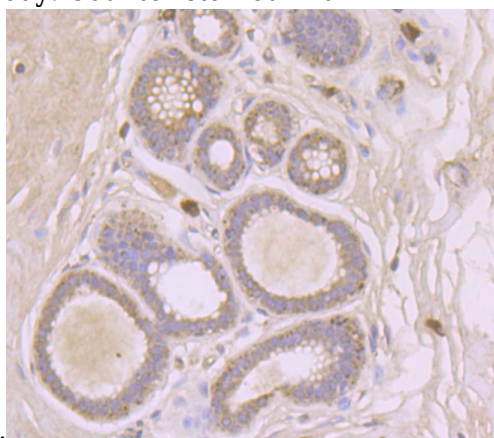


Fig6: Immunohistochemical analysis of paraffin-embedded human breast tissue using anti-SFRP1 antibody. Counter stained with hematoxylin.

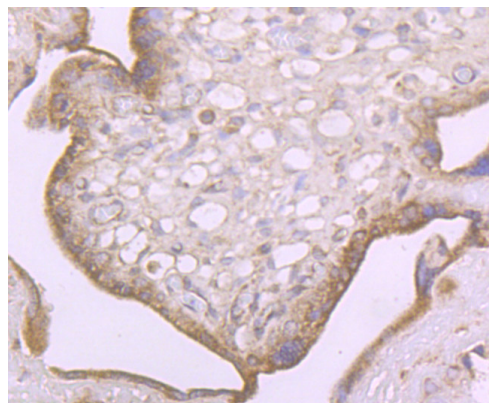


Fig7: Immunohistochemical analysis of paraffin-embedded human placenta tissue using anti-SFRP1 antibody. Counter stained with hematoxylin.

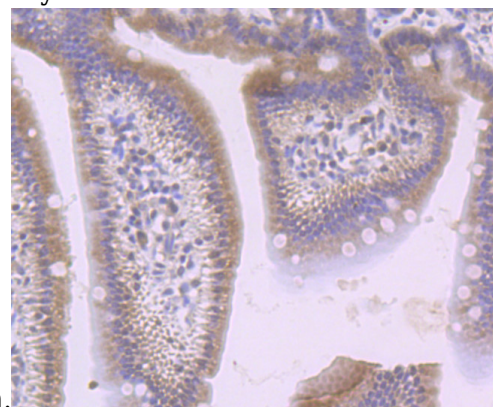


Fig8: Immunohistochemical analysis of paraffin-embedded mouse small intestine tissue using anti-SFRP1 antibody. Counter stained with hematoxylin.

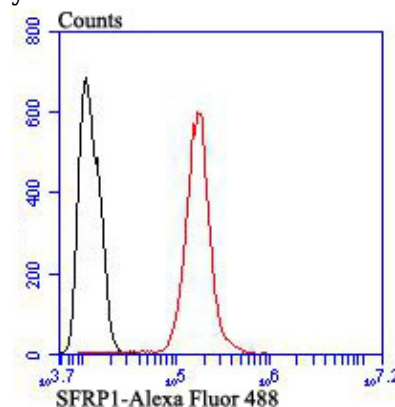


Fig9: Flow cytometric analysis of SH-SY-5Y cells with SFRP1 antibody at 1/100 dilution (red) compared with an unlabelled control (cells without incubation with primary antibody; black). Alexa Fluor 488-conjugated goat anti-rabbit IgG was used as the second antibody.