

ABL2 antibody



Catalog Number: 107818

Product name

ABL2 antibody

Immunogen

[Human ABL2 Recombinant protein \(His tag\)](#)

Specificity

Human, Mouse, Rat; other species not tested.

Antibody description

ABL2 Rabbit Polyclonal antibody. Positive IP detected in HeLa cells. Positive WB detected in HeLa cells, Jurkat cells. Positive IHC detected in human liver cancer tissue, human gliomas tissue. Positive IF detected in HepG2 cells. Observed molecular weight by Western-blot: 128 kDa-140 kDa

Preparation

This antibody was obtained by immunization of ABL2 recombinant protein (Accession Number: NM_005158). Purification method: Antigen affinity purified.

Formulation

PBS with 0.02% sodium azide and 50% glycerol pH 7.3.

Storage

Store at -20°C. DO NOT ALIQUOT

Clonality

Polyclonal

Ig Type

Rabbit IgG

Applications

ELISA, WB, IF, IHC, IP

Dilutions

Recommended Dilution:

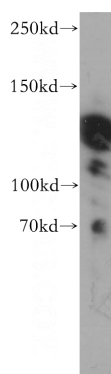
WB: 1:500-1:5000

IP: 1:200-1:2000

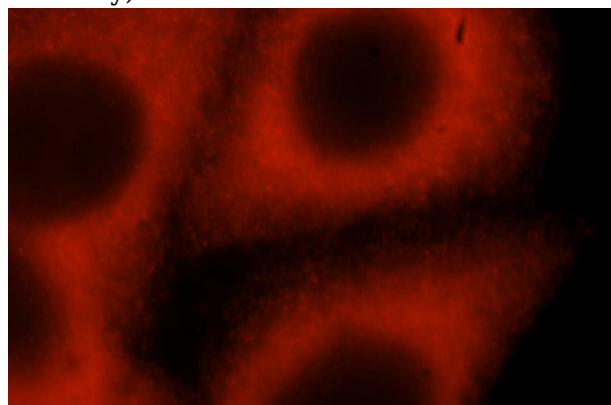
IHC: 1:20-1:200

IF: 1:10-1:100

Validations



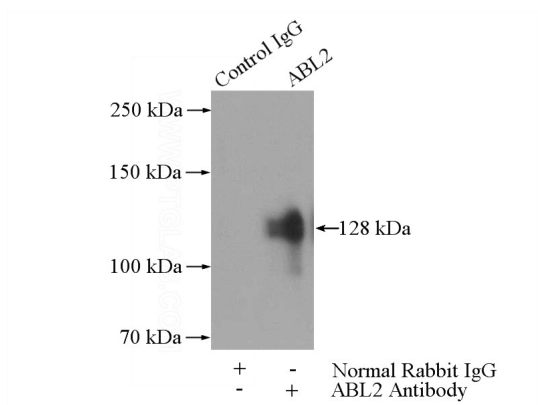
HeLa cells were subjected to SDS PAGE followed by western blot with Catalog No:107818 (ABL2 antibody) at dilution of 1:500



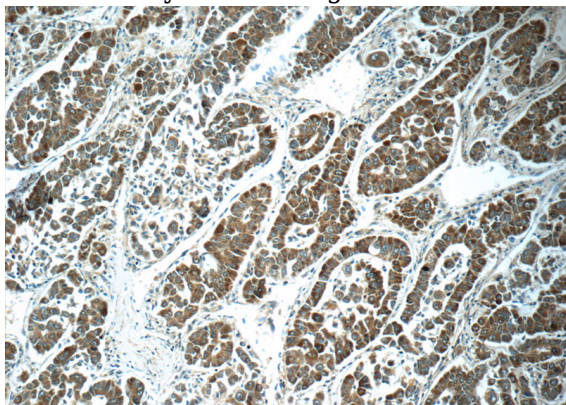
Immunofluorescent analysis of HepG2 cells, using ABL2 antibody Catalog No:107818 at 1:25 dilution and Rhodamine-labeled goat anti-rabbit IgG (red).

ABL2 antibody

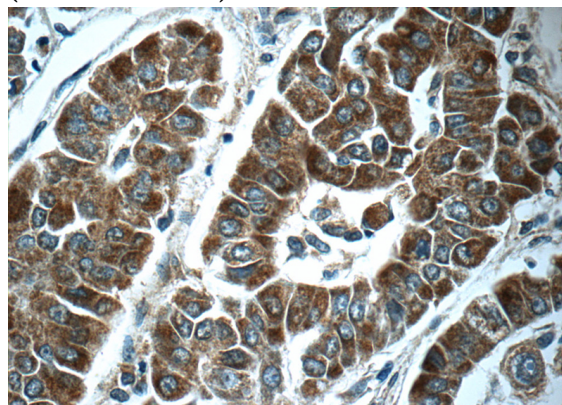
Catalog Number: 107818



IP Result of anti-ABL2 (IP:Catalog No:107818, 4ug; Detection:Catalog No:107818 1:500) with HeLa cells lysate 1200ug.



Immunohistochemistry of paraffin-embedded human liver cancer tissue slide using Catalog No:107818(ABL2 Antibody) at dilution of 1:50 (under 10x lens)



Immunohistochemistry of paraffin-embedded human liver cancer tissue slide using Catalog No:107818(ABL2 Antibody) at dilution of 1:50 (under 40x lens)