

AFG3L2 antibody



Catalog Number: 107908

Product name

AFG3L2 antibody

Immunogen

[Human AFG3L2 Recombinant protein \(GST tag & His tag\)](#)

Specificity

Human, Mouse, Rat; other species not tested.

Antibody description

AFG3L2 Rabbit Polyclonal antibody. Positive IP detected in mouse kidney tissue. Positive WB detected in HeLa cells, HEK-293 cells, human brain tissue, mouse brain tissue, mouse heart tissue, mouse kidney tissue, mouse liver tissue, mouse skeletal muscle tissue. Positive IHC detected in human kidney tissue. Positive IF detected in HepG2 cells. Observed molecular weight by Western-blot: 80-90 kDa

Preparation

This antibody was obtained by immunization of AFG3L2 recombinant protein (Accession Number: NM_006796). Purification method: Antigen affinity purified.

Formulation

PBS with 0.02% sodium azide and 50% glycerol pH 7.3.

Storage

Store at -20°C. DO NOT ALIQUOT

Clonality

Polyclonal

Ig Type

Rabbit IgG

Applications

ELISA, WB, IHC, IF, IP

Dilutions

Recommended Dilution:

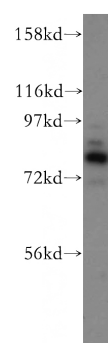
WB: 1:500-1:5000

IP: 1:500-1:5000

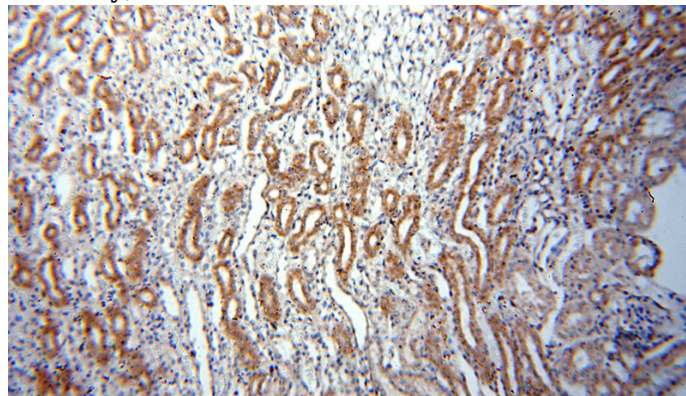
IHC: 1:20-1:200

IF: 1:10-1:100

Validations



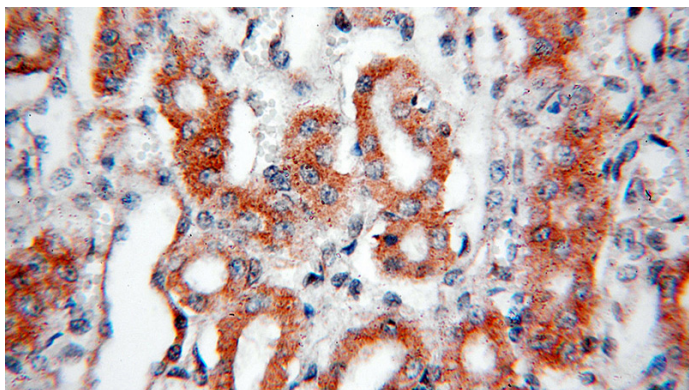
HeLa cells were subjected to SDS PAGE followed by western blot with Catalog No:107908(AFG3L2 antibody) at dilution of 1:800



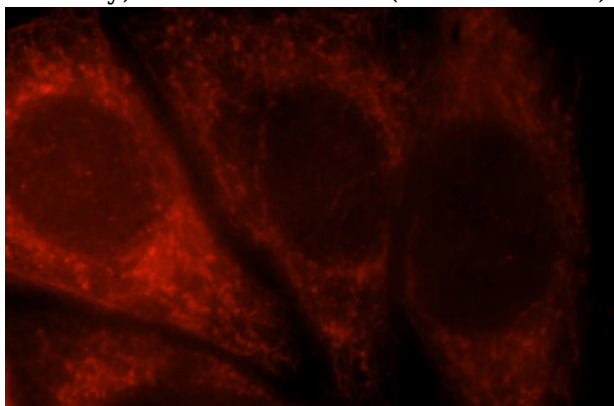
Immunohistochemical of paraffin-embedded human kidney using Catalog No:107908(AFG3L2 antibody) at dilution of 1:50 (under 10x lens)

AFG3L2 antibody

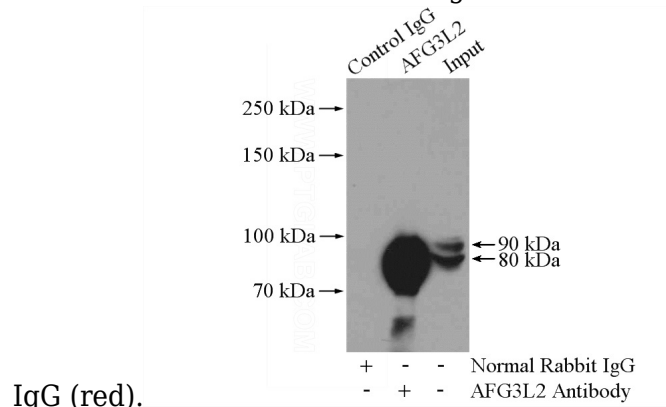
Catalog Number: 107908



Immunohistochemical of paraffin-embedded human kidney using Catalog No:107908(AFG3L2 antibody) at dilution of 1:50 (under 40x lens)



Immunofluorescent analysis of HepG2 cells, using AFG3L2 antibody Catalog No:107908 at 1:25 dilution and Rhodamine-labeled goat anti-rabbit



IgG (red).

IP Result of anti-AFG3L2 (IP:Catalog No:107908, 4ug; Detection:Catalog No:107908 1:1000) with mouse kidney tissue lysate 4000ug.