

# TFE3 antibody



Catalog Number: 116008

## Product name

TFE3 antibody

## Specificity

Human, Mouse, Rat; other species not tested.

## Antibody description

TFE3 Rabbit Polyclonal antibody. Positive WB detected in K-562 cells, human brain tissue, mouse spleen tissue, rat brain tissue. Positive IP detected in K-562 cells. Observed molecular weight by Western-blot: 70 kDa

## Preparation

This antibody was obtained by immunization of TFE3 recombinant protein (Accession Number: NM\_006521). Purification method: Antigen affinity purified.

## Formulation

PBS with 0.02% sodium azide and 50% glycerol pH 7.3.

## Storage

Store at -20°C. DO NOT ALIQUOT

## Clonality

Polyclonal

## Ig Type

Rabbit IgG

## Applications

ELISA, WB, IP

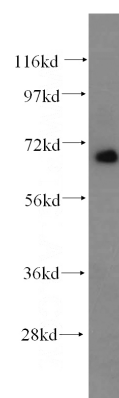
## Dilutions

Recommended Dilution:

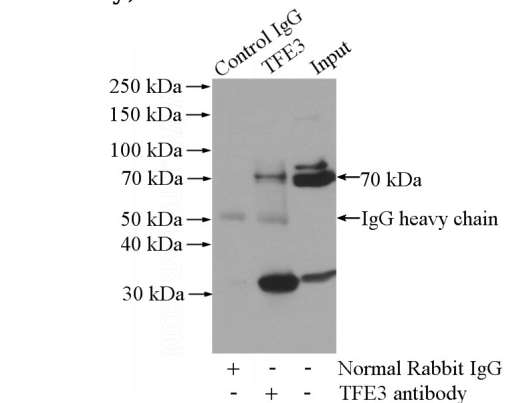
WB: 1:500-1:5000

IP: 1:200-1:2000

## Validations



K-562 cells were subjected to SDS PAGE followed by western blot with Catalog No:116008(TFE3 antibody) at dilution of 1:500



IP Result of anti-TFE3 (IP:Catalog No:116008, 4ug; Detection:Catalog No:116008 1:500) with K-562 cells lysate 1200ug.