

EP300 Polyclonal Antibody



Catalog Number: 161390

Product name

EP300 Polyclonal Antibody

Specificity

Human, Mouse, Rat

Antibody description

Polyclonal antibody to EP300

Preparation

Antigen: Recombinant fusion protein containing a sequence corresponding to amino acids 1-270 of human EP300 (NP_001420.2).

Formulation

PBS with 0.02% sodium azide, 50% glycerol, pH7.3.

Storage

Store at -20°C. Avoid freeze / thaw cycles.

Clonality

Polyclonal

Ig Type

Rabbit IgG

Applications

WB, IHC, IF

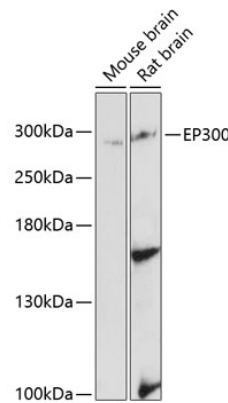
Dilutions

WB 1:500 - 1:2000

IHC 1:50 - 1:200

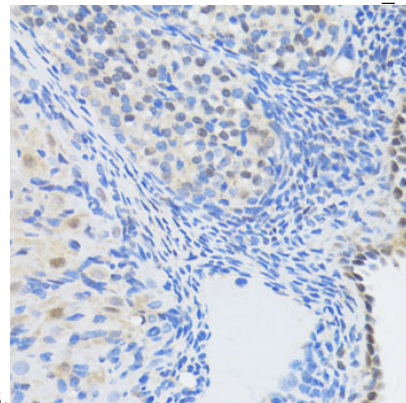
IF 1:50 - 1:200

Validations



Western blot - EP300 Polyclonal Antibody

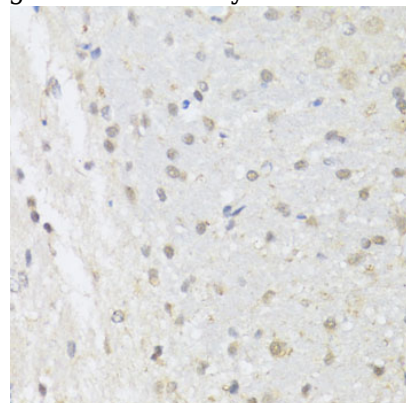
Western blot analysis of extracts of various cell lines, using EP300 antibody at 1:3000 dilution. Secondary antibody: HRP Goat Anti-Rabbit IgG (H+L) at 1:10000 dilution. Lysates/proteins: 25ug per lane. Blocking buffer: 3% nonfat dry milk in TBST. Detection: ECL Enhanced Kit. Exposure



time: 90s.

Immunohistochemistry - EP300 Polyclonal Antibody

Immunohistochemistry of paraffin-embedded rat ovary using EP300 antibody at dilution of 1:100



(40x lens).

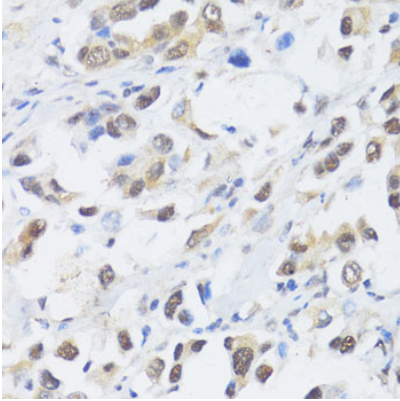
EP300 Polyclonal Antibody



Catalog Number: 161390

Immunohistochemistry - EP300 Polyclonal Antibody

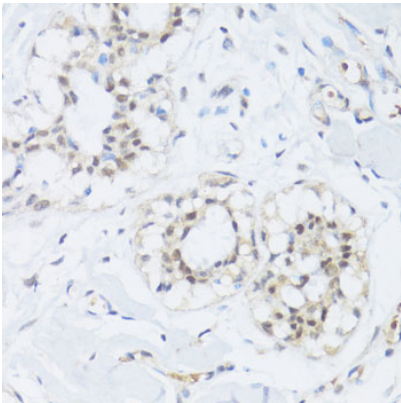
Immunohistochemistry of paraffin-embedded rat brain using EP300 antibody at dilution of 1:100



(40x lens).

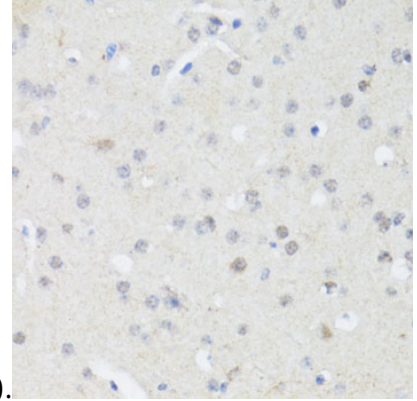
Immunohistochemistry - EP300 Polyclonal Antibody

Immunohistochemistry of paraffin-embedded human lung cancer using EP300 antibody at dilution of 1:100 (40x lens).



Immunohistochemistry - EP300 Polyclonal Antibody

Immunohistochemistry of paraffin-embedded human breast using EP300 antibody at dilution of



1:100 (40x lens).

Immunohistochemistry - EP300 Polyclonal Antibody

Immunohistochemistry of paraffin-embedded mouse brain using EP300 antibody at dilution of 1:100 (40x lens).