

EPO antibody

Catalog Number: 110390

Product name

EPO antibody

Specificity

Human, Mouse; other species not tested.

Antibody description

EPO Rabbit Polyclonal antibody. Positive IHC detected in human kidney tissue. Positive WB detected in mouse liver tissue, mouse kidney tissue. Observed molecular weight by Western-blot: 37 kDa, 45 kDa and 80 kDa

Preparation

This antibody was obtained by immunization of EPO recombinant protein (Accession Number: NM_000799). Purification method: Antigen affinity purified.

Formulation

PBS with 0.02% sodium azide and 50% glycerol pH 7.3.

Storage

Store at -20°C. DO NOT ALIQUOT

Clonality

Polyclonal

Ig Type

Rabbit IgG

Applications

ELISA, WB, IHC

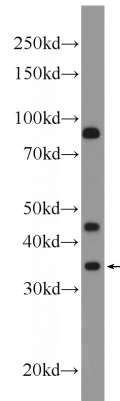
Dilutions

Recommended Dilution:

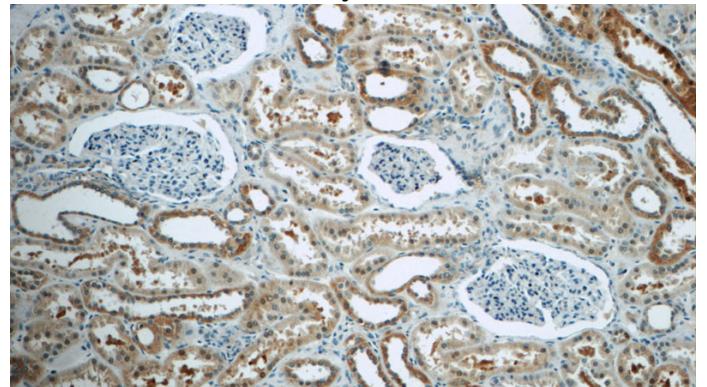
WB: 1:200-1:1000

IHC: 1:20-1:200

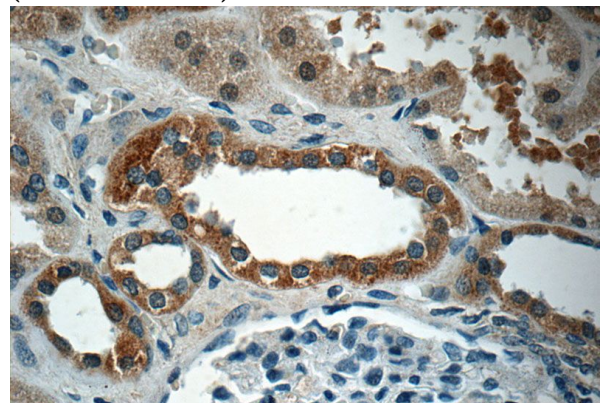
Validations



mouse liver tissue were subjected to SDS PAGE followed by western blot with Catalog No:110390(EPO Antibody) at dilution of 1:300



Immunohistochemistry of paraffin-embedded human kidney tissue slide using Catalog No:110390(EPO Antibody) at dilution of 1:50 (under 10x lens)



Immunohistochemistry of paraffin-embedded human kidney tissue slide using Catalog No:110390(EPO Antibody) at dilution of 1:50

EPO antibody



Catalog Number: 110390

(under 40x lens)