

# Mouse Cyclin E1/CCNE1 (His & GST Tag) recombinant protein



Catalog Number: 501490

## General Information

### Protein Construction

A DNA sequence encoding the mouse CCNE1 (AAH62152.1) (Met1-Glu408) was expressed with the N-terminal polyhistidine-tagged GST tag at the N-terminus.

### Organism

Mouse

### Expression Host

Baculovirus-Insect Cells

## QC Testing

### Activity

Measured by its binding ability in a functional ELISA. Immobilized mouse CCNE1 (Cat:501490) at 10 µg/ml (100 µl/well) can bind biotinylated human CDK4 (Cat:501272), The EC<sub>50</sub> of biotinylated human CDK4 (Cat:501272) is 48.0-114.0 ng/ml.

### Purity

> 90 % as determined by SDS-PAGE

### Endotoxin

< 1.0 EU per µg of the protein as determined by the LAL method

### Stability

Samples are stable for up to twelve months from date of receipt at -70°C

### Predicted N terminal

Met

### Molecular Mass

The recombinant mouse CCNE1/GST chimera consists of 645 amino acids and has a calculated molecular mass of 74.8 kDa. The recombinant protein migrates as an approximately 75 kDa band in SDS-PAGE under reducing conditions.

### Formulation

Lyophilized from sterile 50mM Tris, 100mM NaCl, 3mM DTT, 0.5mM GSH, 10% gly, pH 8.0.

1. 5 % trehalose and mannitol are added as protectants before lyophilization.

2. Please contact us for any concerns or special requirements.

## Usage Guide

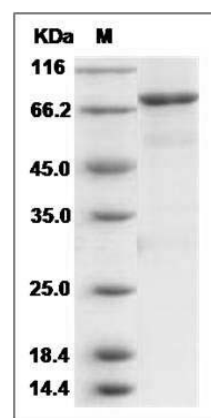
### Storage

Store it under sterile conditions at -20°C to -80°C. It is recommended that the protein be aliquoted for optimal storage. Avoid repeated freeze-thaw cycles.

### Reconstitution

Adding sterile water, prepare a stock solution of 0.25 mg/ml. Concentration is measured by UV-Vis.

### SDS-PAGE



Mouse CCNE1 / Cyclin-E1 Protein (His & GST Tag) SDS-PAGE