

Anti-CHI3L1 antibody



Catalog Number: 175090

Product name

Anti-CHI3L1 antibody

Specificity

Human, Mouse

Antibody description

Mouse monoclonal antibody to CHI3L1

Preparation

This antigen of this antibody was synthetic peptide within human ykl-40 / chi3l1 aa 140-160.

Formulation

Liquid, 1*PBS (pH7.4), 0.2% BSA, 50% Glycerol.
Preservative: 0.05% Sodium Azide.

Storage

Store at +4°C after thawing. Aliquot store at -20°C. Avoid repeated freeze / thaw cycles.

Clonality

Monoclonal

Ig Type

Mouse IgG1

Applications

WB, IHC-P, ICC

Dilutions

WB:1:500-1:1,000

IHC-P:1:50-1:200

FC:1:50-1:100

Validations

kDa

170-
130-
100-
70-
55-
40-
35-
25-

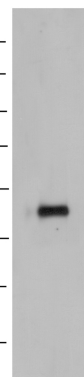


Fig1.; Western blot analysis of YKL-40 / CHI3L1 on THP-1 cell lysates. Proteins were transferred to a PVDF membrane and blocked with 5% BSA in PBS for 1 hour at room temperature. The primary antibody (1/500) was used in 5% BSA at room temperature for 2 hours. Goat Anti-Rabbit IgG - HRP Secondary Antibody (HA1001) at 1:5,000 dilution was used for 1 hour at room temperature.

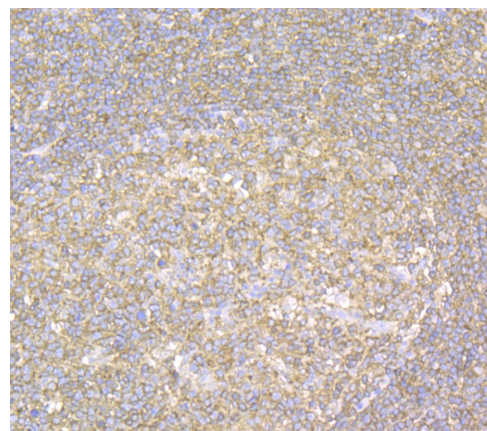
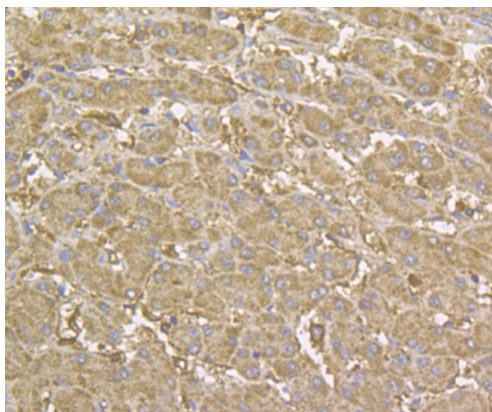


Fig2.; Immunohistochemical analysis of paraffin-embedded human tonsil tissue using anti-YKL-40 / CHI3L1 antibody. The section was pre-treated using heat mediated antigen retrieval with Tris-EDTA buffer (pH 8.0-8.4) for 20 minutes. The tissues were blocked in 5% BSA for 30 minutes at room temperature, washed with ddH₂O and PBS, and then probed with the antibody at 1/50 dilution, for 30 minutes at room temperature and detected using an HRP conjugated compact polymer system. DAB was used as the chromogen. Counter stained with hematoxylin and mounted



with DPX.

Fig3:: Immunohistochemical analysis of paraffin-embedded human liver tissue using anti-YKL-40 / CHI3L1 antibody. The section was pre-treated using heat mediated antigen retrieval with sodium citrate buffer (pH 6.0) for 20 minutes. The tissues were blocked in 5% BSA for 30 minutes at room temperature, washed with ddH₂O and PBS, and then probed with the antibody at 1/200 dilution, for 30 minutes at room temperature and detected using an HRP conjugated compact polymer system. DAB was used as the chromogen. Counter stained with hematoxylin and mounted with DPX.

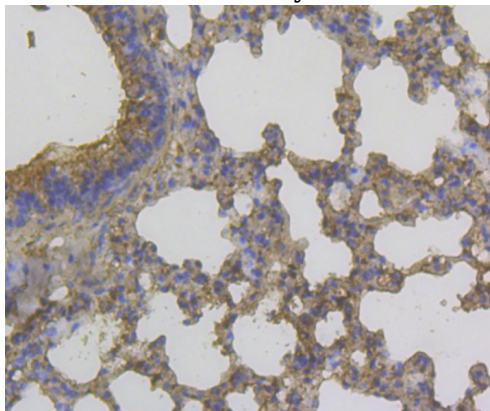


Fig4:: Immunohistochemical analysis of paraffin-embedded mouse lung tissue using anti-YKL-40 / CHI3L1 antibody. The section was pre-treated using heat mediated antigen retrieval with Tris-EDTA buffer (pH 8.0-8.4) for 20 minutes. The tissues were blocked in 5% BSA for 30 minutes at room temperature, washed with ddH₂O and PBS, and then probed with the antibody at 1/200 dilution, for 30 minutes at room temperature and detected using an HRP conjugated compact polymer system. DAB was used as the chromogen. Counter stained with hematoxylin and mounted

with DPX.

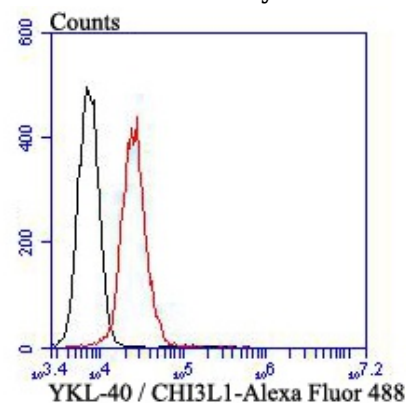


Fig5:: Flow cytometric analysis of YKL-40 / CHI3L1 was done on HepG2 cells. The cells were fixed, permeabilized and stained with YKL-40 / CHI3L1 antibody at 1/100 dilution (red) compared with an unlabelled control (cells without incubation with primary antibody; black). After incubation of the primary antibody on room temperature for an hour, the cells were stained with a Alexa Fluor™ 488-conjugated goat anti-mouse IgG Secondary antibody at 1/500 dilution for 30 minutes.