

# ADCY3 antibody



Catalog Number: 107780

## Product name

ADCY3 antibody

IHC: 1:20-1:200

IF: 1:20-1:200

## Specificity

Human, Mouse, Rat; other species not tested.

## Antibody description

ADCY3 Rabbit Polyclonal antibody. Positive IHC detected in human kidney tissue, human heart tissue. Positive IF detected in MDCK cells, HepG2 cells, Mouse embryonic fibroblasts. Positive WB detected in mouse skeletal muscle tissue, human brain tissue. Observed molecular weight by Western-blot: 170-180kd

## Preparation

This antibody was obtained by immunization of Peptide (Accession Number: NM\_004036).  
Purification method: Antigen affinity purified.

## Formulation

PBS with 0.02% sodium azide and 50% glycerol  
pH 7.3.

## Storage

Store at -20°C. DO NOT ALIQUOT

## Clonality

Polyclonal

## Ig Type

Rabbit IgG

## Applications

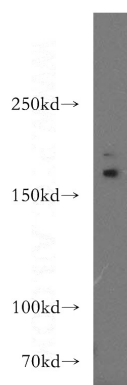
ELISA, WB, IHC, IF

## Dilutions

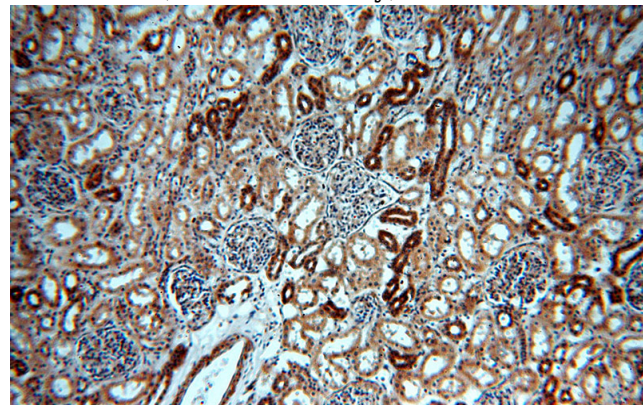
Recommended Dilution:

WB: 1:200-1:2000

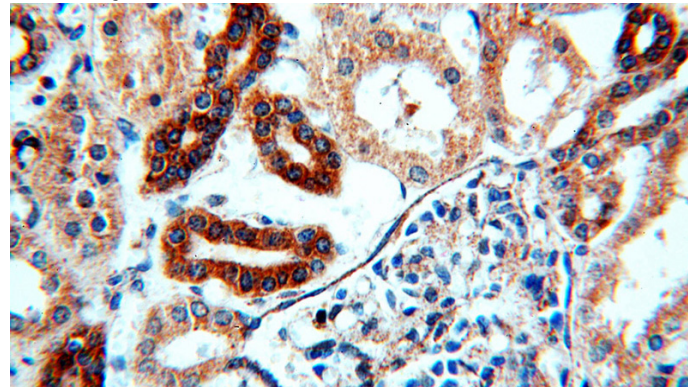
## Validations



mouse skeletal muscle tissue were subjected to SDS PAGE followed by western blot with Catalog No:107780(ADCY3 antibody) at dilution of 1:300



Immunohistochemical of paraffin-embedded human kidney using Catalog No:107780(ADCY3 antibody) at dilution of 1:100 (under 10x lens)



Immunohistochemical of paraffin-embedded human kidney using Catalog No:107780(ADCY3

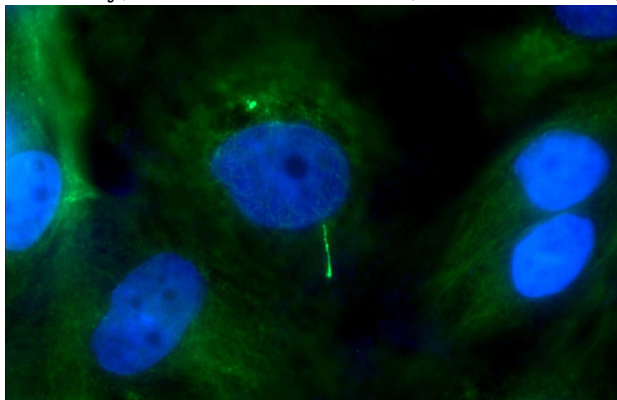
# ADCY3 antibody



Catalog Number: 107780

---

antibody) at dilution of 1:100 (under 40x lens)



Immunofluorescent analysis of MDCK cells using Catalog No:107780(ACIII Antibody) at dilution of 1:50 and Alexa Fluor 488-conjugated AffiniPure Goat Anti-Rabbit IgG(H+L)