

Human EPHA8 recombinant protein (C-human IgG1-Fc)



Catalog Number: 514780

General Information

Gene Name Synonym

EPH- and ELK-related kinase; EPH-like kinase 3; EK3; hEK3; Tyrosine-protein kinase receptor EEK

Protein Construction

A DNA sequence encoding the human EPHA8 (NP_065387.1) (Met1-Thr542) was expressed with the Fc region of human IgG1 at the C-terminus.

Organism

Human

Expression Host

Human Cells

QC Testing

Purity

> 80 % as determined by SDS-PAGE.

Endotoxin

< 1.0 EU per μ g protein as determined by the LAL method.

Stability

Samples are stable for up to twelve months from date of receipt at -70°C

Predicted N terminal

Ala 28

Molecular Mass

The recombinant human EPHA8 consists of 753 amino acids and predicts a molecular mass of 83.6 kDa.

Formulation

Lyophilized from sterile PBS, pH 7.4.

1. Normally 5 % - 8 % trehalose, mannitol and 0.01% Tween80 are added as protectants before lyophilization. Specific concentrations are included in the hardcopy of COA.
2. Please contact us for any concerns or special requirements.

Usage Guide

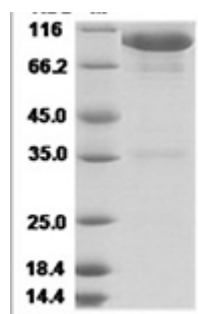
Storage

Store it under sterile conditions at -20°C to -80°C. It is recommended that the protein be aliquoted for optimal storage. Avoid repeated freeze-thaw cycles.

Reconstitution

A hardcopy of COA with reconstitution instruction is sent along with the products. Please refer to it for detailed information.

SDS-PAGE



Human EPHA8/Eph receptor A8 Protein 15090