

Anti-MAL antibody



Catalog Number: 176680

Product name

Anti-MAL antibody

Specificity

Human, Mouse, Rat

Antibody description

Mouse monoclonal antibody to MAL

Preparation

This antigen of this antibody was peptide

Formulation

Liquid, 1*PBS (pH7.4), 0.2% BSA, 50% Glycerol.
Preservative: 0.05% Sodium Azide.

Storage

Store at +4°C after thawing. Aliquot store at -20°C or -80°C. Avoid repeated freeze / thaw cycles.

Clonality

Monoclonal

Ig Type

Mouse IgG1

Applications

WB, IHC-P, FC

Dilutions

WB: 1:500-1:1,000

IHC-P: 1:50-1:200

FC: 1:50-1:200

Validations

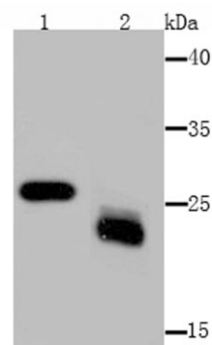


Fig1: Western blot analysis of MAL on mouse kidney (1) and mouse lymphatic vessels (2) tissue lysate using anti-MAL antibody at 1/1,000 dilution.

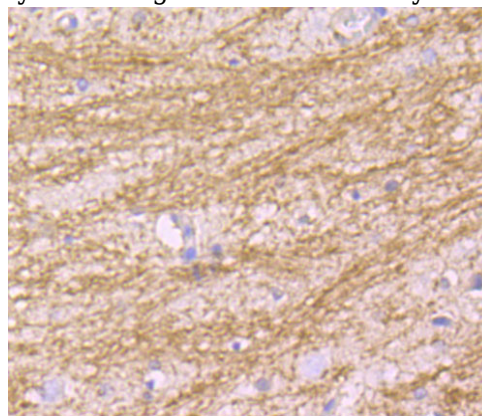


Fig2: Immunohistochemical analysis of paraffin-embedded rat brain tissue using anti-MAL antibody. Counter stained with hematoxylin.

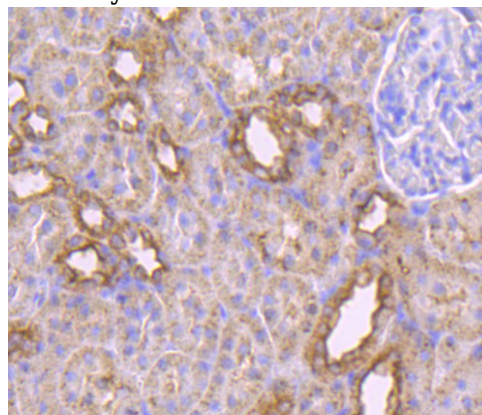


Fig3: Immunohistochemical analysis of paraffin-embedded rat kidney tissue using anti-MAL antibody. Counter stained with hematoxylin.

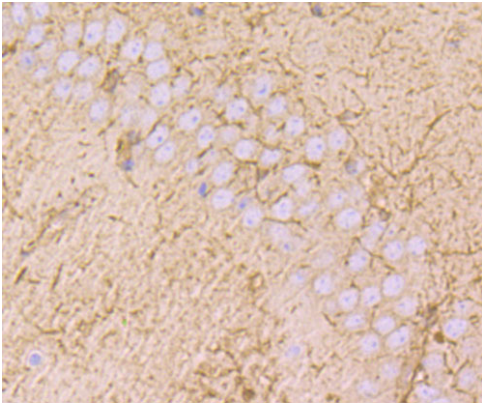


Fig4: Immunohistochemical analysis of paraffin-embedded mouse brain tissue using anti-MAL antibody. Counter stained with hematoxylin.

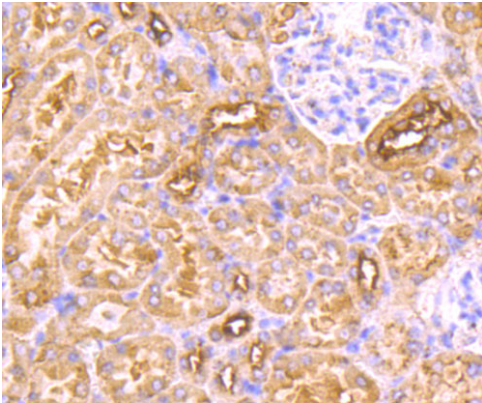


Fig5: Immunohistochemical analysis of paraffin-embedded mouse kidney tissue using anti-MAL antibody. Counter stained with hematoxylin.

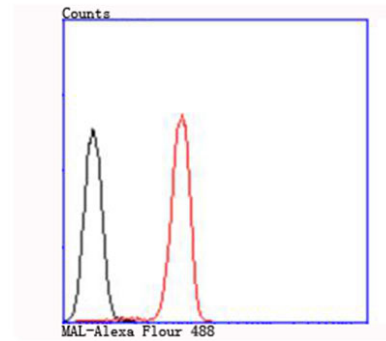


Fig6: Flow cytometric analysis of Jurkat cells with MAL antibody at 1/100 dilution (red) compared with an unlabelled control (cells without incubation with primary antibody; black).