

STARD5 antibody



Catalog Number: 115680

Product name

STARD5 antibody

ELISA, WB, IHC, IF

Immunogen

[Human STARD5 Recombinant protein \(GST tag & His tag\)](#)

Dilutions

Recommended Dilution:

WB: 1:200-1:2000

IHC: 1:10-1:100

IF: 1:10-1:100

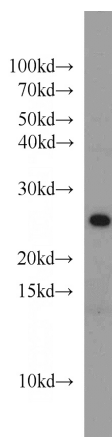
Specificity

Human, Mouse; other species not tested.

Antibody description

STARD5 Rabbit Polyclonal antibody. Positive IF detected in HepG2 cells. Positive IHC detected in human pancreas cancer tissue, human liver tissue. Positive WB detected in mouse liver tissue, COLO 320 cells, HepG2 cells, human brain tissue, L02 cells. Observed molecular weight by Western-blot: 24-26kd

Validations



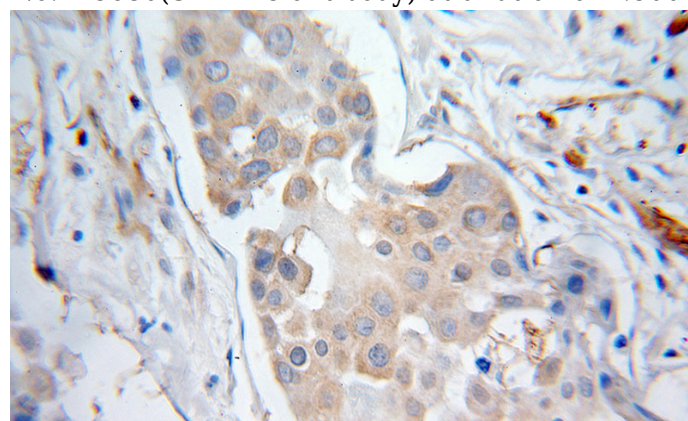
Preparation

This antibody was obtained by immunization of STARD5 recombinant protein (Accession Number: NM_181900). Purification method: Antigen affinity purified.

mouse liver tissue were subjected to SDS PAGE followed by western blot with Catalog No:115680(STARD5 antibody) at dilution of 1:500

Formulation

PBS with 0.1% sodium azide and 50% glycerol pH 7.3.



Storage

Store at -20°C. DO NOT ALIQUOT

Clonality

Polyclonal

Ig Type

Rabbit IgG

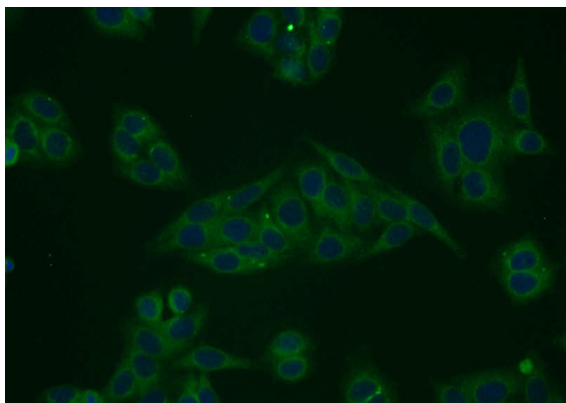
Immunohistochemical of paraffin-embedded human pancreas cancer using Catalog No:115680(STARD5 antibody) at dilution of 1:10 (under 10x lens)

Applications

STARD5 antibody



Catalog Number: 115680



Immunofluorescent analysis of HepG2 cells using Catalog No:115680(STARD5 Antibody) at dilution of 1:25 and Alexa Fluor 488-conjugated AffiniPure Goat Anti-Rabbit IgG(H+L)