

IGF1R-Specific antibody



Catalog Number: 107280

Product name

IGF1R-Specific antibody

Specificity

Human; other species not tested.

Antibody description

IGF1R-Specific Mouse Monoclonal antibody. Positive WB detected in HepG2 cells, HeLa cells, HUVEC cells, MCF-7 cells. Positive IHC detected in human breast cancer tissue. Observed molecular weight by Western-blot: 130-140 kDa

Preparation

This antibody was obtained by immunization of Peptide (Accession Number: NM_000875). Purification method: Protein G purified.

Formulation

PBS with 0.02% sodium azide and 50% glycerol pH 7.3.

Storage

Store at -20°C. DO NOT ALIQUOT

Clonality

Monoclonal

Ig Type

Mouse IgG1

Applications

ELISA, WB, IHC

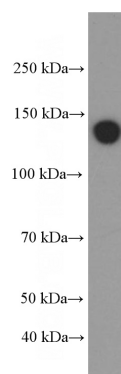
Dilutions

Recommended Dilution:

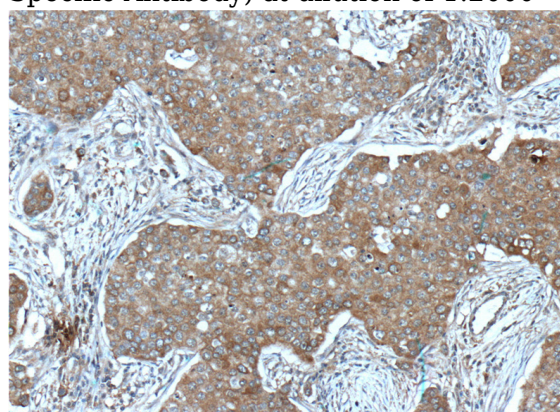
WB: 1:1000-1:10000

IHC: 1:50-1:500

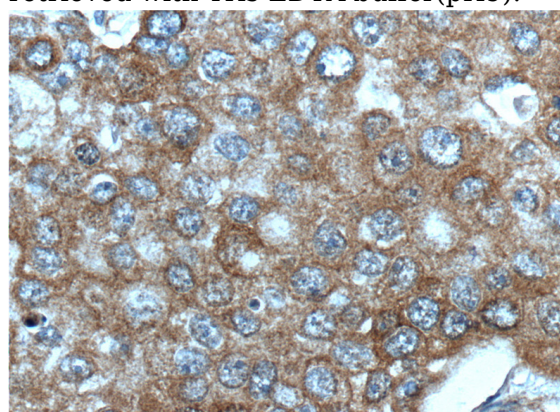
Validations



HepG2 cells were subjected to SDS PAGE followed by western blot with Catalog No:107280(IGF1R-Specific Antibody) at dilution of 1:2000



Immunohistochemistry of paraffin-embedded human breast cancer tissue slide using Catalog No:107280(IGF1R-Specific Antibody) at dilution of 1:200 (under 10x lens). heat mediated antigen retrieved with Tris-EDTA buffer(pH9).



Immunohistochemistry of paraffin-embedded human breast cancer tissue slide using Catalog No:107280(IGF1R-Specific Antibody) at dilution of

IGF1R-Specific antibody



Catalog Number: 107280

1:200 (under 40x lens). heat mediated antigen

retrieved with Tris-EDTA buffer(pH9).