

# SHP2 antibody



Catalog Number: 115280

## Product name

SHP2 antibody

Recommended Dilution:

WB: 1:500-1:5000

## Specificity

Human, Mouse, Rat; other species not tested.

IP: 1:500-1:5000

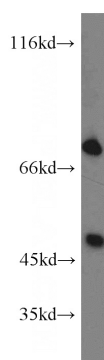
IHC: 1:20-1:200

## Antibody description

SHP2 Rabbit Polyclonal antibody. Positive IP detected in HEK-293 cells. Positive WB detected in Jurkat cells, A431 cells, HEK-293 cells, human brain tissue, human heart tissue, human skeletal muscle tissue, MCF7 cells, NIH/3T3 cells, U-937 cells. Positive IHC detected in human breast cancer tissue, human heart tissue. Positive IF detected in Hela cells, MCF-7 cells. Observed molecular weight by Western-blot: 68-75kd

IF: 1:10-1:100

## Validations



## Preparation

This antibody was obtained by immunization of SHP2 recombinant protein (Accession Number: NM\_080601). Purification method: Antigen affinity purified.

Jurkat cells were subjected to SDS PAGE followed by western blot with Catalog No:115280(PTPN11 antibody) at dilution of 1:500

## Formulation

PBS with 0.02% sodium azide and 50% glycerol pH 7.3.

## Storage

Store at -20°C. DO NOT ALIQUOT

## Clonality

Polyclonal

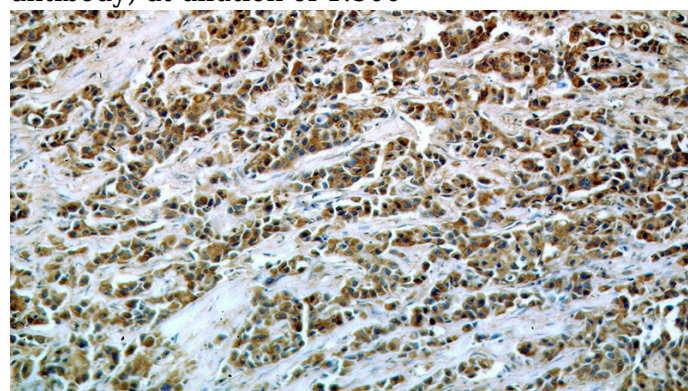
## Ig Type

Rabbit IgG

## Applications

ELISA, WB, IHC, IF, IP

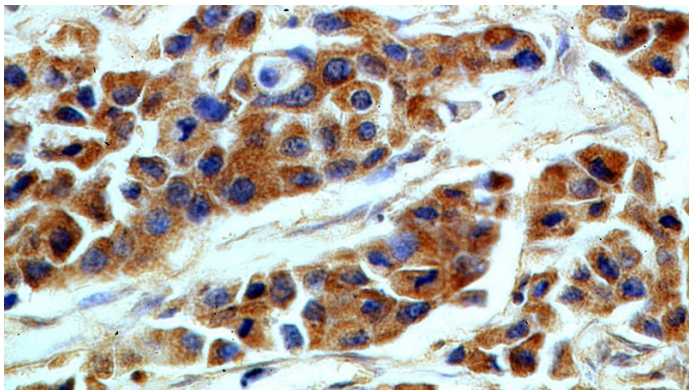
## Dilutions



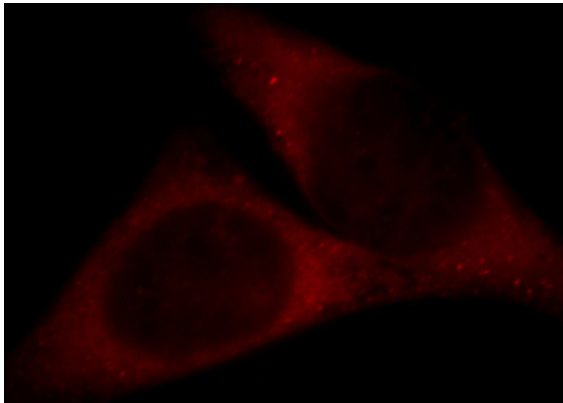
Immunohistochemical of paraffin-embedded human breast cancer using Catalog No:115280(PTPN11 antibody) at dilution of 1:100 (under 10x lens)

# SHP2 antibody

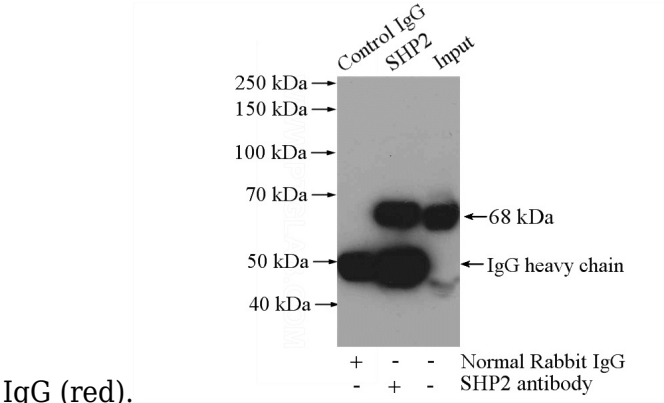
Catalog Number: 115280



Immunohistochemical of paraffin-embedded human breast cancer using Catalog No:115280(PTPN11 antibody) at dilution of 1:100 (under 40x lens)



Immunofluorescent analysis of HeLa cells, using PTPN11 antibody Catalog No:115280 at 1:25 dilution and Rhodamine-labeled goat anti-rabbit



IgG (red).

IP Result of anti-PTPN11 (IP:Catalog No:115280, 4ug; Detection:Catalog No:115280 1:1000) with HEK-293 cells lysate 2800ug.