

# Caspase 1/p20/p10 antibody



Catalog Number: 108870

## Product name

Caspase 1/p20/p10 antibody

## Immunogen

[Human Caspase 1 Recombinant protein \(His tag\)](#)

## Specificity

Human, Mouse, Rat; other species not tested.

## Antibody description

Caspase 1/p20/p10 Rabbit Polyclonal antibody. Positive IF detected in C6 cells. Positive WB detected in Jurkat cells, C6 cells, HeLa cells, MCF7 cells, MDA-MB-453s cells, NIH/3T3 cells, Raji cells, RAW264.7 cells. Observed molecular weight by Western-blot: 45-47 kDa, 30 kDa, 35 kDa

## Preparation

This antibody was obtained by immunization of Caspase 1/p20/p10 recombinant protein (Accession Number: NM\_033293). Purification method: Antigen Affinity purified.

## Formulation

PBS with 0.02% sodium azide and 50% glycerol pH 7.3.

## Storage

Store at -20°C. DO NOT ALIQUOT

## Clonality

Polyclonal

## Ig Type

Rabbit IgG

## Applications

ELISA, WB, IF

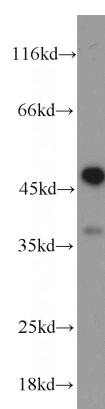
## Dilutions

Recommended Dilution:

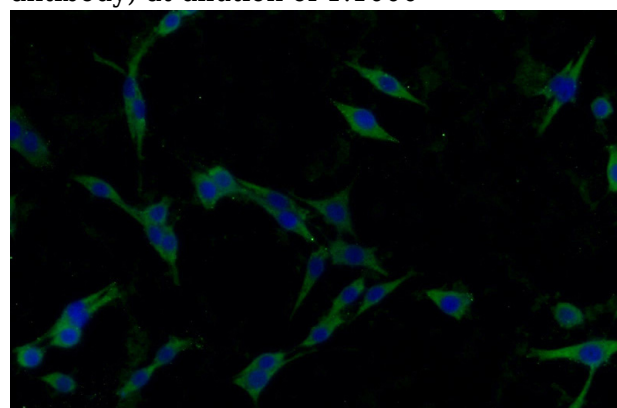
WB: 1:500-1:5000

IF: 1:10-1:100

## Validations



Jurkat cells were subjected to SDS PAGE followed by western blot with Catalog No:108870(CASP1 antibody) at dilution of 1:1000



Immunofluorescent analysis of C6 cells using Catalog No:108870(Caspase 1 Antibody) at dilution of 1:25 and Alexa Fluor 488-conjugated AffiniPure Goat Anti-Rabbit IgG(H+L)