

# Anti-GAPDH Rabbit antibody



Catalog Number: 169070

## Product name

Anti-GAPDH Rabbit antibody

## Specificity

Human, Mouse, Rat, Monkey, Chicken, Zebrafish

## Antibody description

GAPDH Rabbit polyclonal antibody

## Preparation

Antigen: A synthesized peptide derived from human GAPDH

## Formulation

Rabbit IgG in phosphate buffered saline , pH 7.4, 150mM NaCl, 0.02% sodium azide and 50% glycerol.

## Storage

Store at 4°C short term. Store at -20°C long term. Avoid freeze / thaw cycle.

## Clonality

Polyclonal

## Ig Type

Rabbit IgG

## Applications

WB, IHC-P, ICC/IF, IP, FC

## Dilutions

WB: 1/3000-1/10000

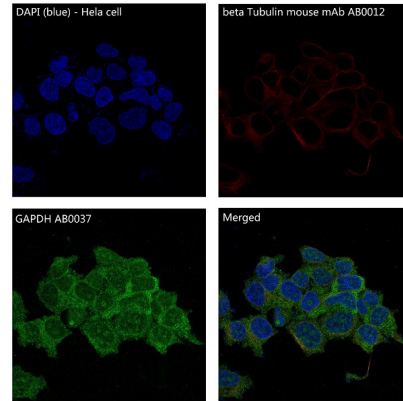
IHC: 1/100-1/500

ICC/IF: 1/100-1/250

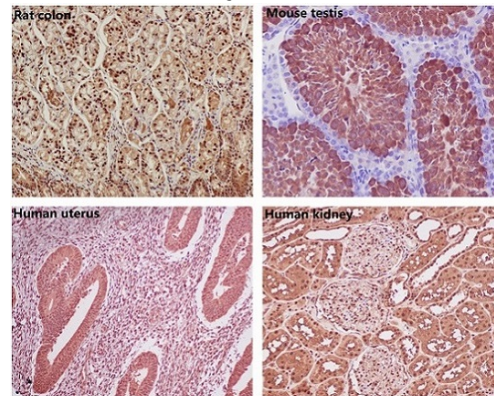
IP: 1/50

FC: 1/50

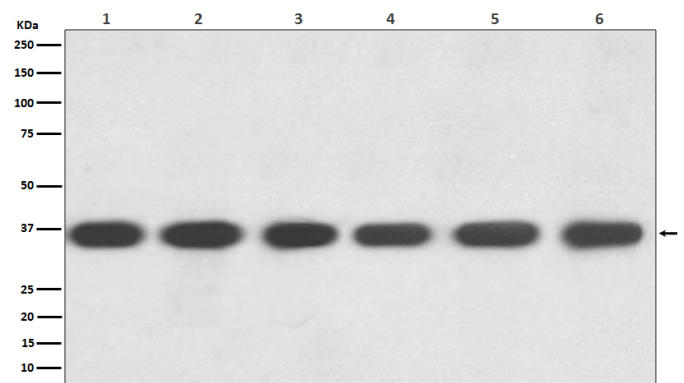
## Validations



Immunofluorescent analysis of HeLa cells, using GAPDH Antibody .



Immunohistochemical analysis of paraffin-embedded (1) Rat colon; (2) Mouse testis; (3) Human uterus; (4) Human kidney, using GAPDH Antibody .



Western blot analysis of GAPDH expression in (1) HeLa cell lysate; (2) Jurkat cell lysate; (3) Mouse kidney lysate; (4) Mouse spleen lysate; (5) RAW

# Anti-GAPDH Rabbit antibody



Catalog Number: 169070

---

264.7 cell lysate; (6) Rat brain lysate with GAPDH Antibody.