

# MITD1 antibody



Catalog Number: 112660

## Product name

MITD1 antibody

## Immunogen

[Human MITD1 Recombinant protein \(GST tag & His tag\)](#)

## Specificity

Human, Mouse, Rat; other species not tested.

## Antibody description

MITD1 Rabbit Polyclonal antibody. Positive WB detected in HeLa cells, NIH/3T3 cells. Positive IP detected in HeLa cells. Observed molecular weight by Western-blot: 29 kDa

## Preparation

This antibody was obtained by immunization of MITD1 recombinant protein (Accession Number: NM\_138798). Purification method: Antigen affinity purified.

## Formulation

PBS with 0.02% sodium azide and 50% glycerol pH 7.3.

## Storage

Store at -20°C. DO NOT ALIQUOT

## Clonality

Polyclonal

## Ig Type

Rabbit IgG

## Applications

ELISA, WB, IP

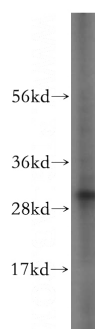
## Dilutions

Recommended Dilution:

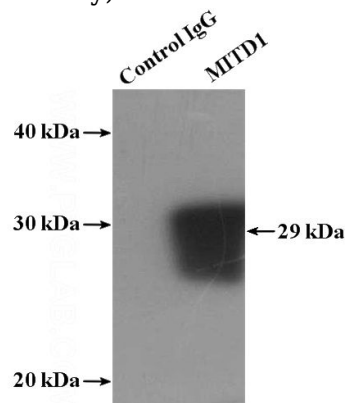
WB: 1:500-1:5000

IP: 1:200-1:2000

## Validations



HeLa cells were subjected to SDS PAGE followed by western blot with Catalog No:112660(MITD1 antibody) at dilution of 1:500



IP Result of anti-MITD1 (IP:Catalog No:112660, 4ug; Detection:Catalog No:112660 1:500) with HeLa cells lysate 1080ug.