

# CCDC105 antibody

Catalog Number: 108960

## Product name

CCDC105 antibody

IHC: 1:20-1:200

IF: 1:20-1:200

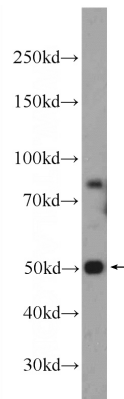
## Specificity

Human; other species not tested.

## Validations

## Antibody description

CCDC105 Rabbit Polyclonal antibody. Positive WB detected in DU 145 cells, HeLa cells, SH-SY5Y cells. Positive IHC detected in human testis tissue. Positive IF detected in HeLa cells. Observed molecular weight by Western-blot: 50-55 kDa



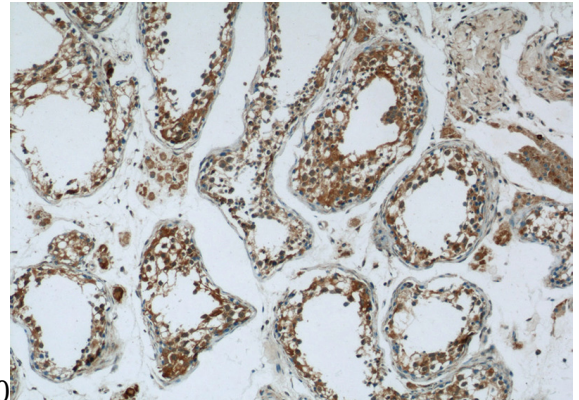
## Preparation

This antibody was obtained by immunization of CCDC105 recombinant protein (Accession Number: NM\_173482). Purification method: Antigen Affinity purified.

DU 145 cells were subjected to SDS PAGE followed by western blot with Catalog No:108960(CCDC105 antibody) at dilution of

## Formulation

PBS with 0.02% sodium azide and 50% glycerol pH 7.3.



## Storage

Store at -20°C. DO NOT ALIQUOT

## Clonality

Polyclonal

Immunohistochemistry of paraffin-embedded human testis tissue slide using Catalog No:108960(CCDC105 Antibody) at dilution of 1:50 (under 10x lens)

## Ig Type

Rabbit IgG

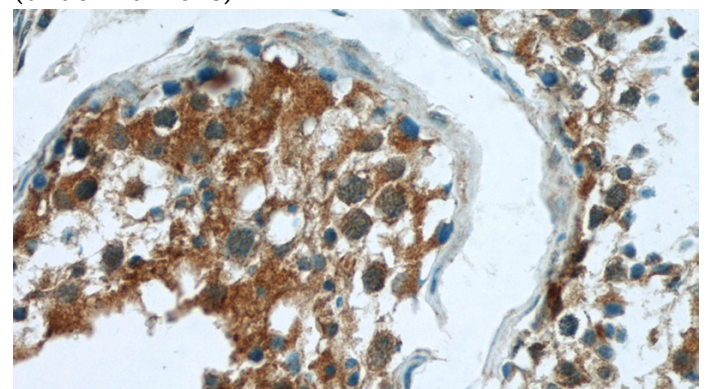
## Applications

ELISA, WB, IHC, IF

## Dilutions

Recommended Dilution:

WB: 1:500-1:5000



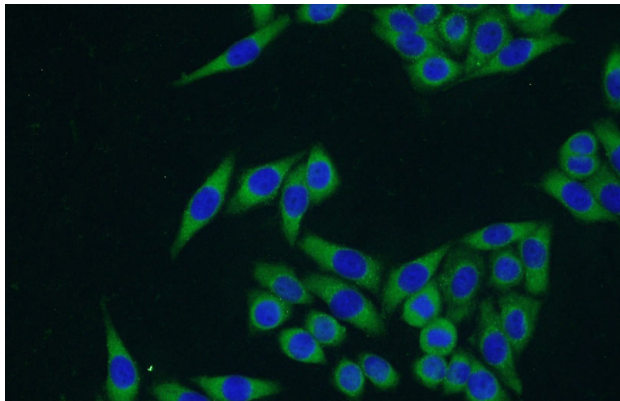
Immunohistochemistry of paraffin-embedded

# CCDC105 antibody

Catalog Number: 108960

---

human testis tissue slide using Catalog No:108960(CCDC105 Antibody) at dilution of 1:50 (under 40x lens)



Immunofluorescent analysis of HeLa cells using Catalog No:108960(CCDC105 Antibody) at dilution of 1:50 and Alexa Fluor 488-conjugated AffiniPure Goat Anti-Rabbit IgG(H+L)