

# Anti-EWSR1 Rabbit antibody



Catalog Number: 166860

## Product name

Anti-EWSR1 Rabbit antibody

## Specificity

Human, Mouse, Rat

## Antibody description

EWSR1 Rabbit polyclonal antibody

## Preparation

Antigen: A synthetic peptide of human EWSR1

## Formulation

Supplied in 50nM Tris-Glycine(pH 7.4), 0.15M NaCl, 40%Glycerol, 0.01% sodium azide and 0.05% BSA.

## Storage

Store at -20°C. Stable for 12 months from date of receipt.

## Clonality

Polyclonal

## Ig Type

Rabbit IgG

## Applications

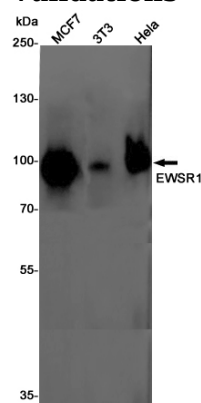
WB, ICC/IF

## Dilutions

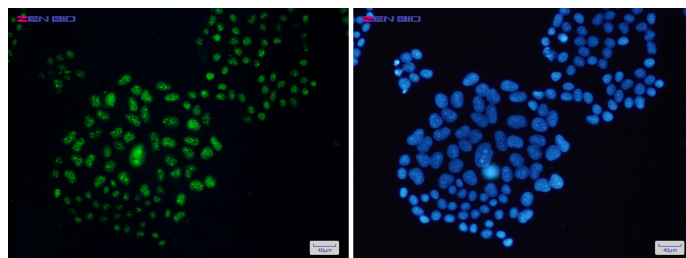
WB: 1/2000-1/10000

ICC/IF: 1/50-1/200

## Validations



Western blot detection of EWSR1 in MCF7, 3T3, HeLa cell lysates using EWSR1 Rabbit pAb(1:1000 diluted). Predicted band size: 69KDa. Observed band size: 85KDa.



Immunocytochemistry of EWSR1 (green) in HeLa cells using EWSR1 Rabbit pAb at dilution 1/50, and DAPI (blue)