

# Anti-phospho-PKC delta (Ser299) Rabbit antibody



Catalog Number: 168060

## Product name

Rabbit IgG

Anti-phospho-PKC delta (Ser299) Rabbit antibody

## Applications

## Specificity

WB, IHC-P, IP

Human, Mouse

## Dilutions

## Antibody description

WB: 1/1000

phospho-PKC delta (Ser299) Rabbit monoclonal antibody

IHC: 1/20

## Preparation

IP: 1/20

Antigen: A synthetic phosphopeptide corresponding to residues surrounding Ser299 of human PKC delta

## Validations

## Formulation

50nM Tris-Glycine(pH 7.4), 0.15M NaCl, 40%Glycerol, 0.01% sodium azide and 0.05% BSA

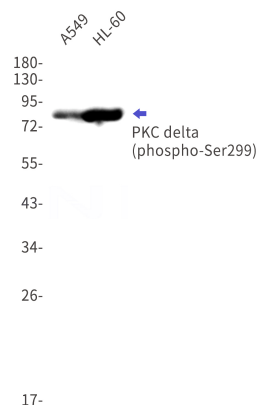
## Storage

Store at 4°C short term. Store at -20°C long term. Avoid freeze / thaw cycle.

## Clonality

Monoclonal

## Ig Type



Western blot detection of phospho-PKC delta (Ser299) in A549,HL-60 cell lysates using phospho-PKC delta (Ser299) Rabbit mAb(1:1000 diluted).Predicted band size:78kDa.Observed band size:78kDa.