

# PCP4L1 antibody



Catalog Number: 113750

## Product name

PCP4L1 antibody

## Immunogen

[Human PCP4L1 Recombinant protein \(GST tag & His tag\)](#)

## Specificity

Human, Mouse, Rat; other species not tested.

## Antibody description

PCP4L1 Rabbit Polyclonal antibody. Positive WB detected in mouse brain tissue. Observed molecular weight by Western-blot: 8-12 kDa

## Preparation

This antibody was obtained by immunization of PCP4L1 recombinant protein (Accession Number: BC028905). Purification method: Antigen affinity purified.

## Formulation

PBS with 0.1% sodium azide and 50% glycerol pH 7.3.

## Storage

Store at -20°C. DO NOT ALIQUOT

## Clonality

Polyclonal

## Ig Type

Rabbit IgG

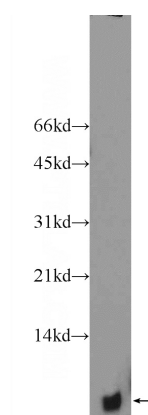
## Applications

ELISA, WB

## Dilutions

Recommended Dilution:  
WB: 1:200-1:2000

## Validations



mouse brain tissue were subjected to SDS PAGE followed by western blot with Catalog No:113750(PCP4L1 Antibody) at dilution of 1:600