

Anti-GRAMD1A antibody

Catalog Number: 176650

Product name

Anti-GRAMD1A antibody

Specificity

Human, Mouse

Antibody description

Mouse monoclonal antibody to GRAMD1A

Preparation

This antigen of this antibody was recombinant protein

Formulation

Liquid, 1*PBS (pH7.4), 0.2% BSA, 40% Glycerol.
Preservative: 0.05% Sodium Azide

Storage

Store at +4°C after thawing. Aliquot store at -20°C or -80°C. Avoid repeated freeze / thaw cycles.

Clonality

Monoclonal

Ig Type

Mouse IgM

Applications

WB, ICC, IHC-P

Dilutions

WB: 1:1,000-1:2,000

ICC: 1:50-1:200

IHC-P: 1:50-1:200

Validations

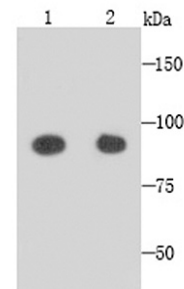


Fig1: Western blot analysis of GRAMD1A on NIH/3T3 (1) and SHG-44 (2) cells lysates using anti-GRAMD1A antibody at 1/1,000 dilution.

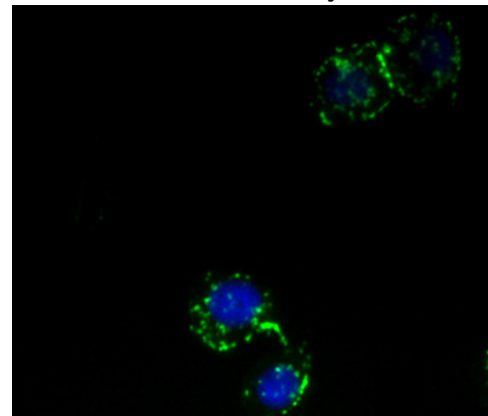


Fig2: ICC staining GRAMD1A in HepG2 cells (green). The nuclear counter stain is DAPI (blue). Cells were fixed in paraformaldehyde, permeabilised with 0.25% Triton X100/PBS.

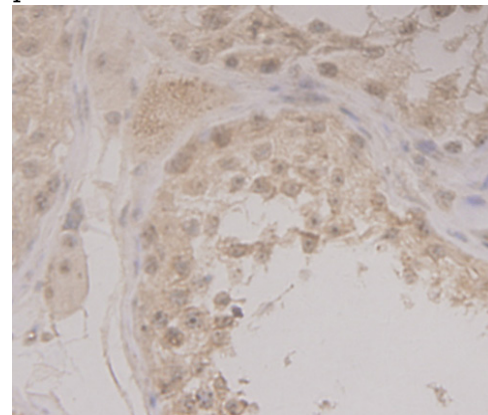
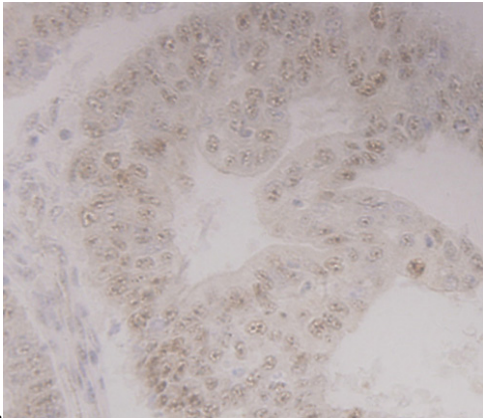


Fig3: Immunohistochemical analysis of paraffin-embedded human tonsil tissue using anti-GRAMD1A antibody. Counter stained with

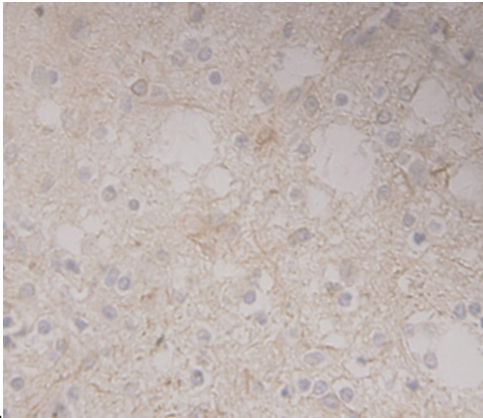
Anti-GRAMD1A antibody

Catalog Number: 176650



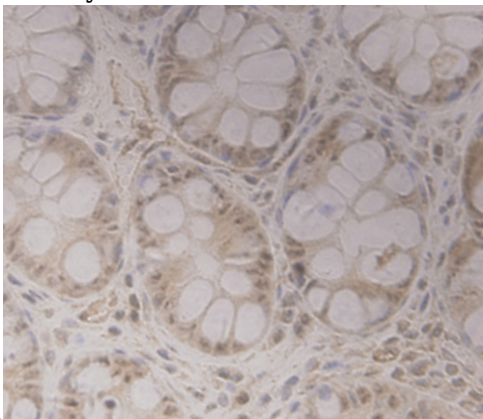
hematoxylin.

Fig4: Immunohistochemical analysis of paraffin-embedded human endometrial cancer tissue using anti-GRAMD1A antibody. Counter stained with



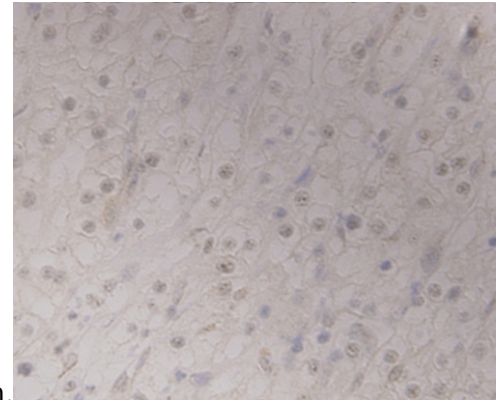
hematoxylin.

Fig5: Immunohistochemical analysis of paraffin-embedded human glioma tissue using anti-GRAMD1A antibody. Counter stained with



hematoxylin.

Fig6: Immunohistochemical analysis of paraffin-embedded human colon tissue using anti-GRAMD1A antibody. Counter stained with



hematoxylin.

Fig7: Immunohistochemical analysis of paraffin-embedded human renal cell carcinoma tissue using anti-GRAMD1A antibody. Counter stained with hematoxylin.

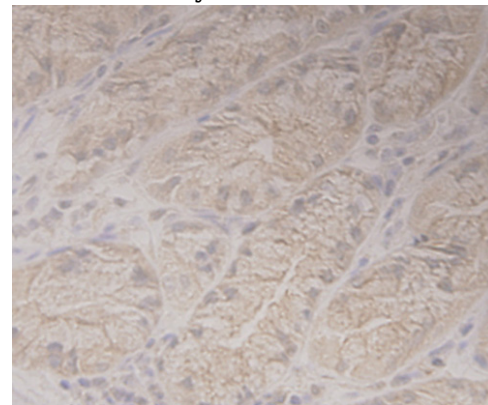
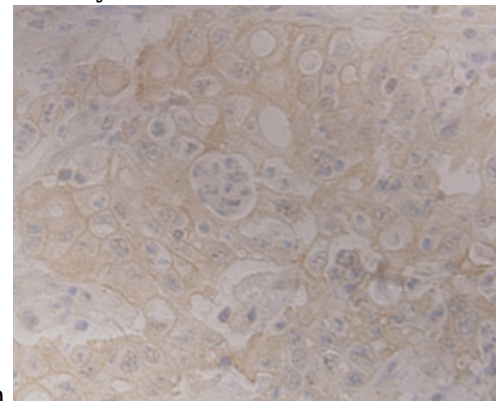


Fig8: Immunohistochemical analysis of paraffin-embedded human stomach tissue using anti-GRAMD1A antibody. Counter stained with



hematoxylin.

Fig9: Immunohistochemical analysis of paraffin-embedded human gastric adenocarcinoma tissue using anti-GRAMD1A antibody. Counter stained with hematoxylin.