

# Anti-xCT Rabbit antibody



Catalog Number: 167550

## Product name

Polyclonal

Anti-xCT Rabbit antibody

## Ig Type

Rabbit IgG

## Specificity

Human, Mouse, Rat

## Applications

WB, IP

## Antibody description

xCT Rabbit polyclonal antibody

## Dilutions

WB: 1/500-1/2000

## Preparation

Antigen: A synthesized peptide derived from human xCT

IP: 1/50

## Formulation

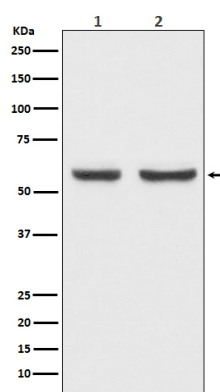
Rabbit IgG in phosphate buffered saline , pH 7.4, 150mM NaCl, 0.02% sodium azide and 50% glycerol.

## Validations

## Storage

Store at 4°C short term. Store at -20°C long term. Avoid freeze / thaw cycle.

## Clonality



Western blot analysis of xCT expression in (1) HepG2 cell lysate; (2) Mouse brain lysate.