

# Human HER3/ErbB3 (aa 730-1065, His & GST Tag) recombinant protein



Catalog Number: 503150

## General Information

### Gene Name Synonym

Proto-oncogene-like protein c-ErbB-3; Tyrosine kinase-type cell surface receptor HER3

### Protein Construction

A DNA sequence encoding the cytoplasmic domain (Pro 730-Ser 1065) of human ErbB3 (NP\_001973.2) was fused with the N-terminal polyhistidine-tagged GST tag at the N-terminus.

### Organism

Human

### Expression Host

Baculovirus-Insect Cells

## QC Testing

### Activity

1. No Kinase Activity
2. Using the Octet RED System, the affinity constant (Kd) of human ErBB3-GST (Cat:503150) bound to human NRG1 (aa 2-224) (Cat:504102) was 20 nM.

### Purity

> 82 % as determined by SDS-PAGE

### Endotoxin

< 1.0 EU per µg of the protein as determined by the LAL method

### Stability

Samples are stable for up to twelve months from date of receipt at -70°C

### Predicted N terminal

Met

### Molecular Mass

The recombinant human ErbB3 /GST chimera consists of 573 amino acids and has a calculated molecular mass of 65 KDa. It migrates as an approximately 65 KDa band as predicted in SDS-PAGE under reducing conditions.

### Formulation

- Lyophilized from sterile 50mM Tris, 100mM NaCl, pH 7.5, 10% gly, 1mM GSH
1. 5 % trehalose and mannitol are added as protectants before lyophilization.
  2. Please contact us for any concerns or special requirements.

## Usage Guide

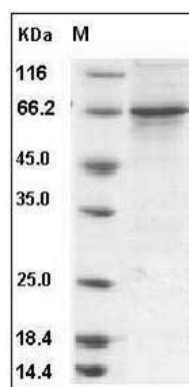
### Storage

Store it under sterile conditions at -20°C to -80°C. It is recommended that the protein be aliquoted for optimal storage. Avoid repeated freeze-thaw cycles.

### Reconstitution

Adding sterile water, prepare a stock solution of 0.25 mg/ml. Concentration is measured by UV-Vis.

### SDS-PAGE



Human HER3 / ErbB3 Protein (aa 730-1065, His & GST Tag) SDS-PAGE