

KIF6 antibody



Catalog Number: 112050

Product name

KIF6 antibody

Recommended Dilution:

WB: 1:200-1:2000

Immunogen

[Human KIF6 Recombinant protein \(GST tag & His tag\)](#)

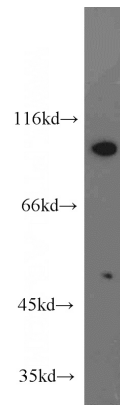
IP: 1:200-1:2000

IHC: 1:20-1:200

Specificity

Human, Mouse, Rat; other species not tested.

Validations



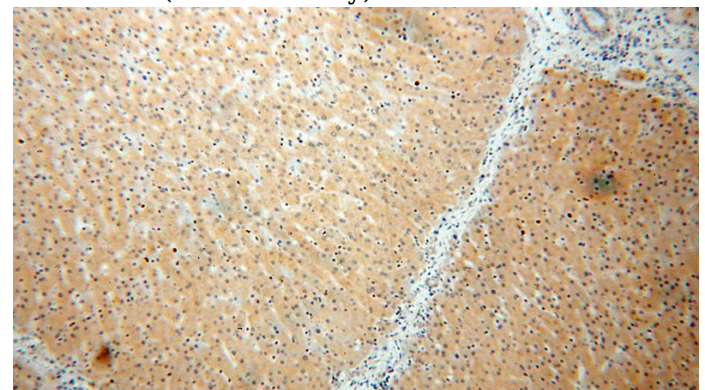
Antibody description

KIF6 Rabbit Polyclonal antibody. Positive IHC detected in human liver tissue. Positive IP detected in mouse testis tissue. Positive WB detected in mouse testis tissue. Observed molecular weight by Western-blot: 93 kDa

mouse testis tissue were subjected to SDS PAGE followed by western blot with Catalog No:112050(KIF6 antibody) at dilution of 1:800

Preparation

This antibody was obtained by immunization of KIF6 recombinant protein (Accession Number: NM_001289024). Purification method: Antigen affinity purified.



Formulation

PBS with 0.02% sodium azide and 50% glycerol pH 7.3.

Storage

Store at -20°C. DO NOT ALIQUOT

Clonality

Polyclonal

Ig Type

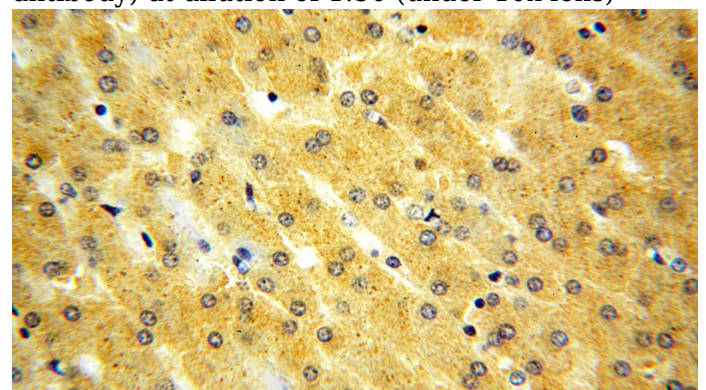
Rabbit IgG

Applications

ELISA, WB, IHC, IP

Dilutions

Immunohistochemical of paraffin-embedded human liver using Catalog No:112050(KIF6 antibody) at dilution of 1:50 (under 10x lens)



KIF6 antibody



Catalog Number: 112050

Immunohistochemical of paraffin-embedded human liver using Catalog No:112050(KIF6 antibody) at dilution of 1:50 (under 40x lens)

IP Result of anti-KIF6 (IP:Catalog No:112050, 4ug; Detection:Catalog No:112050 1:500) with mouse testis tissue lysate 4000ug.

