

ATP1A1 antibody



Catalog Number: 108340

Product name

ATP1A1 antibody

ELISA, IP, IHC, WB

Immunogen

[Human ATP1A1 Recombinant protein \(GST tag & His tag\)](#)

Dilutions

Recommended Dilution:

WB: 1:500-1:5000

IP: 1:200-1:1000

IHC: 1:20-1:200

Specificity

Human, Mouse, Rat; other species not tested.

Antibody description

ATP1A1 Rabbit Polyclonal antibody. Positive IP detected in HEK-293 cells. Positive WB detected in mouse heart tissue, A549 cells, COLO 320 cells, HEK-293 cells, human colon tissue. Positive IHC detected in human liver cancer tissue, human ovary tumor tissue. Observed molecular weight by Western-blot: 100kd

Preparation

This antibody was obtained by immunization of ATP1A1 recombinant protein (Accession Number: NM_000701). Purification method: Antigen affinity purified.

Formulation

PBS with 0.02% sodium azide and 50% glycerol pH 7.3.

Storage

Store at -20°C. DO NOT ALIQUOT

Clonality

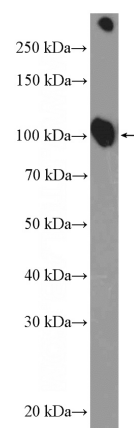
Polyclonal

Ig Type

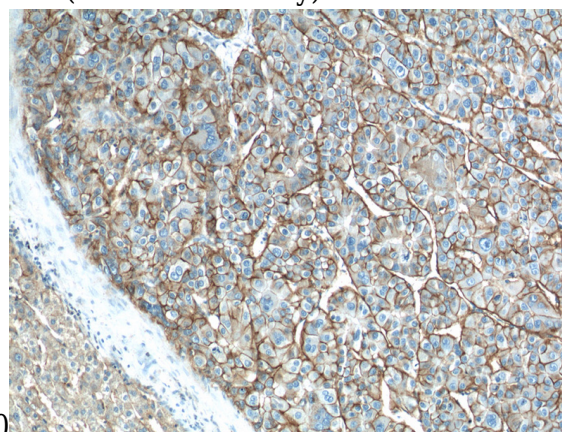
Rabbit IgG

Applications

Validations



mouse heart tissue were subjected to SDS PAGE followed by western blot with Catalog No:117301(ATP1A1 Antibody) at dilution of

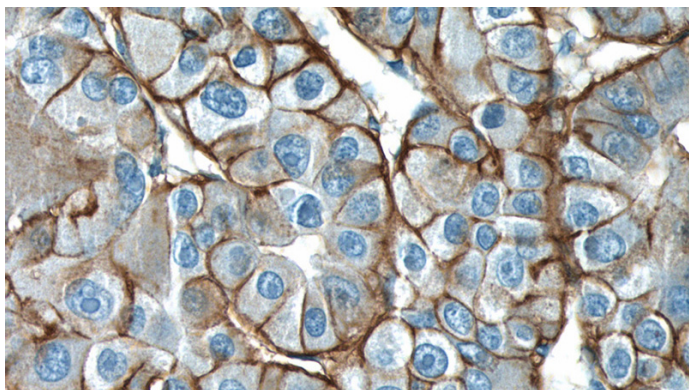


1:1000

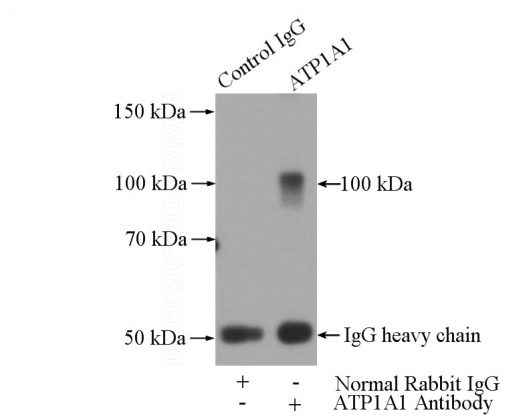
Immunohistochemistry of paraffin-embedded human liver cancer tissue slide using Catalog No:117301(ATP1A1 Antibody) at dilution of 1:200 (under 10x lens)

ATP1A1 antibody

Catalog Number: 108340



Immunohistochemistry of paraffin-embedded human liver cancer tissue slide using Catalog No:117301(ATP1A1 Antibody) at dilution of 1:200 (under 40x lens)



IP Result of anti-ATP1A1 (IP:Catalog No:117301, 4ug; Detection:Catalog No:117301 1:300) with HEK-293 cells lysate 2800ug.